

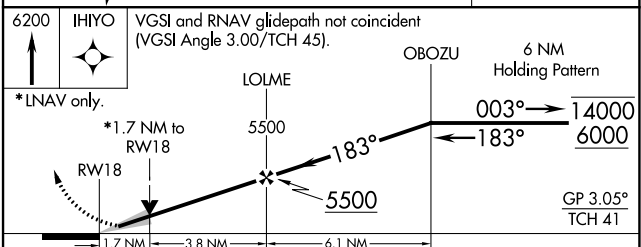
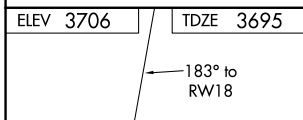
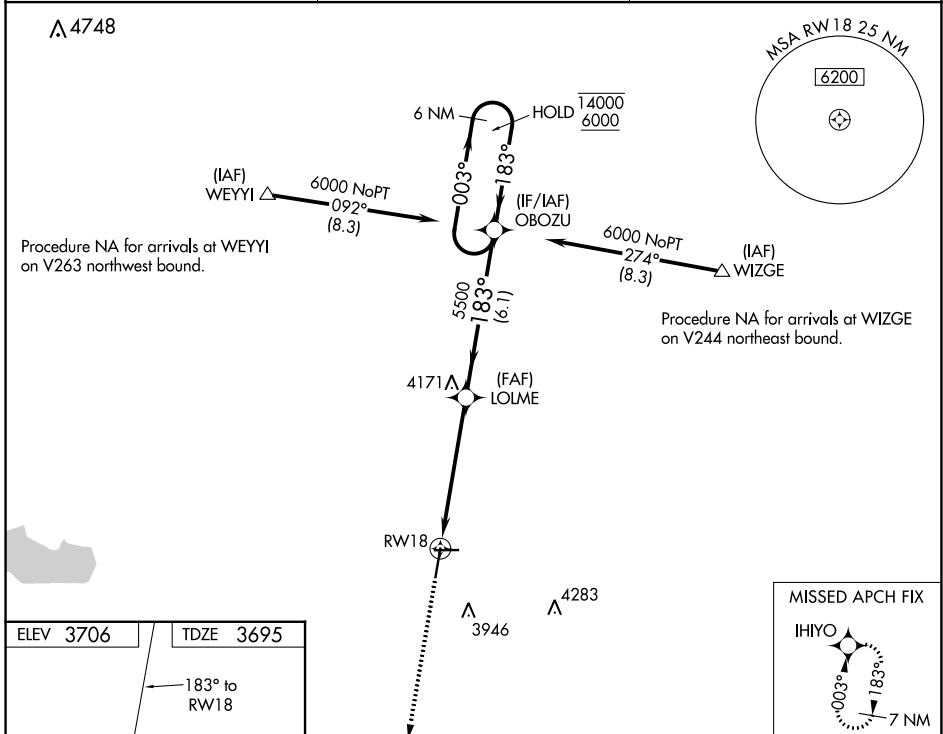
WAAS CH <b>86613</b> <b>W18A</b>	APP CRS <b>183°</b>	Rwy Idg TDZE Apt Elev	<b>6304</b> <b>3695</b> <b>3706</b>
--	------------------------	-----------------------------	---

# RNAV (GPS) RWY 18

SOUTHEAST COLORADO RGNL (L.A.A)

RNP APCH.	MISSED APPROACH: Climb to 6200 direct IHIYO and hold.
<p>▼ For uncompensated Baro-VNAV systems, LNAV/VNAV NA below -22°C or above 54°C.</p> <p>▲</p>	

ASOS <b>135.625</b>	DENVER CENTER <b>133.4 377.175</b>	UNICOM <b>122.8 (CTAF) 1</b>
------------------------	---------------------------------------	---------------------------------



CATEGORY	A	B	C	D
LPV DA	3945-1 250 (300-1)			
LNAV/VNAV DA	4014-1¼ 319 (400-1¼)			
LNAV MDA	4260-1	565 (600-1)	4260-1½	565 (600-1½)

SW-1, 26 DEC 2024 to 23 JAN 2025

SW-1, 26 DEC 2024 to 23 JAN 2025