

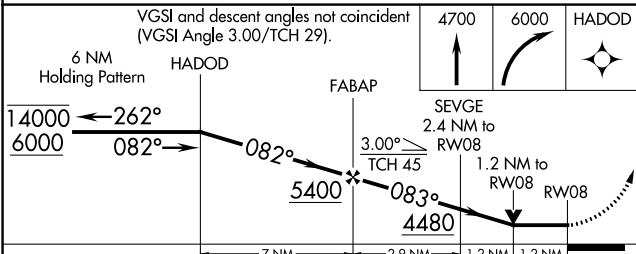
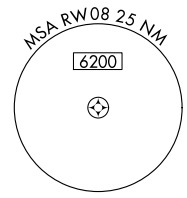
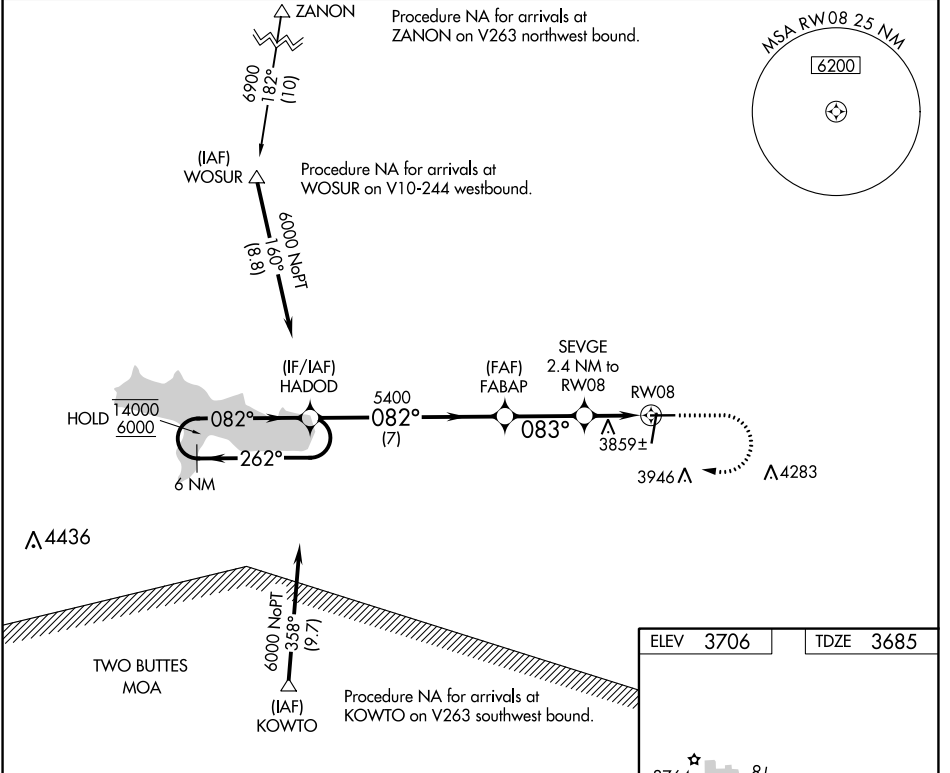
WAAS CH <b>97429</b> <b>W08A</b>	APP CRS <b>083°</b>	Rwy Idg TDZE Apt Elev	<b>5001</b> <b>3685</b> <b>3706</b>
--	------------------------	-----------------------------	---

# RNAV (GPS) RWY 8

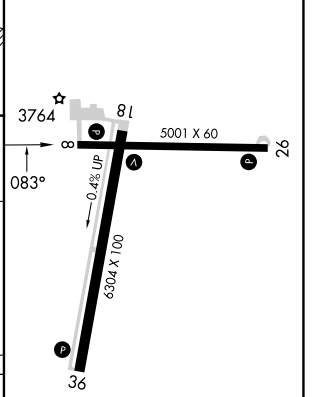
SOUTHEAST COLORADO RGNL (LAA)

RNP APCH.	MISSED APPROACH: Climb to 4700 then climbing right turn to 6000 direct HADOD and hold.
	Rwy 8 helicopter visibility reduction below 3/4 SM NA.

ASOS <b>135.625</b>	DENVER CENTER <b>133.4 377.175</b>	UNICOM <b>122.8 (CTAF) 0</b>
------------------------	---------------------------------------	---------------------------------



ELEV 3706	TDZE 3685
-----------	-----------



CATEGORY	A	B	C	D
LP MDA	4080-1	395 (400-1)	4080-1 1/8	395 (400-1 1/8)
LNAV MDA	4120-1	435 (500-1)	4120-1 1/4	435 (500-1 1/4)

REIL Rwy 8, 26, 18, and 36   
 MRL Rwy 8-26 and 18-36

SW-1, 26 DEC 2024 to 23 JAN 2025

SW-1, 26 DEC 2024 to 23 JAN 2025