

| | | | |
|---------------------------|------------------------|-----------------------------|---|
| LOC I-SPW 110.9 | APP CRS 121° | Rwy Idg TDZE Apt Elev | 6001 1339 1339 |
|---------------------------|------------------------|-----------------------------|---|

ILS or LOC RWY 12

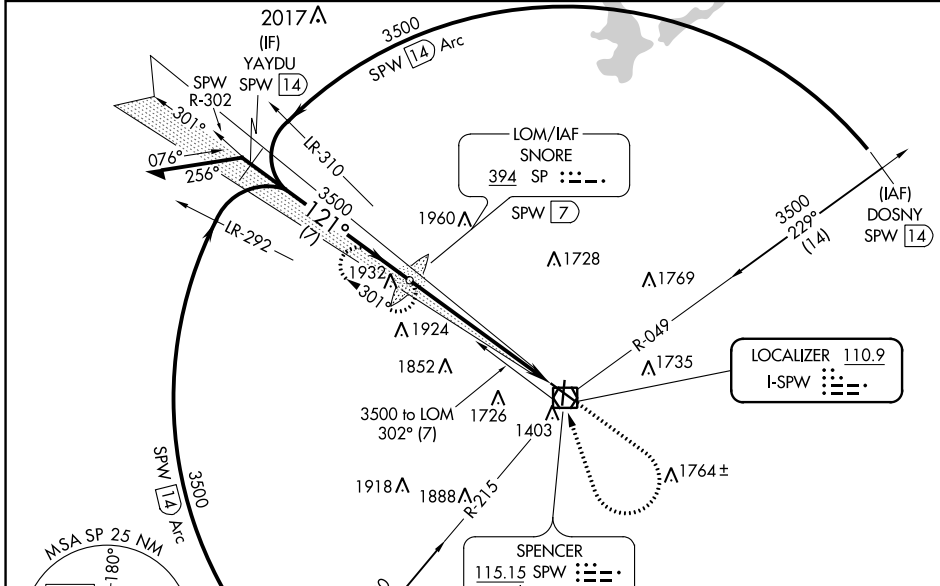
SPENCER MUNI (SPW)

ADF or DME required.

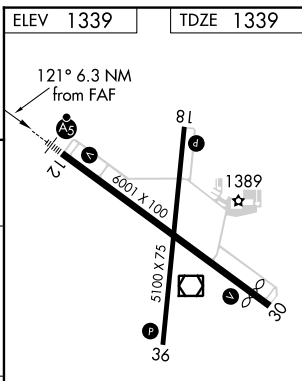
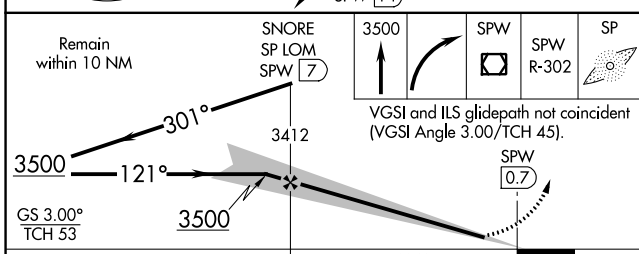
NA For inop ALS, increase S-LOC 12 Cats C and D visibility to 1 1/2 SM. When local altimeter setting not received, use Estherville altimeter setting and increase S-ILS 12 DA to 1599 feet; increase all MDAs 60 feet and S-LOC 12 visibility Cat C/D 1/2 SM, and Circling visibility Cat C/D 1/2 SM. For inop ALS, when using Estherville altimeter setting, increase S-LOC 12 Cats C and D visibility to 1 1/2 SM.

MALSR MISSED APPROACH: Climb to 3500 then right turn direct SPW VOR/DME then on SPW VOR/DME R-302 to SNORE LOM/SPW VOR/DME 7 DME and hold.

| | | |
|------------------------|---|--|
| ASOS 126.625 | MINNEAPOLIS CENTER 127.75 257.7 | UNICOM 123.0 (CTAF) 1 |
|------------------------|---|--|



| | |
|-----------|-----------|
| ELEV 1339 | TDZE 1339 |
|-----------|-----------|



| CATEGORY | A | B | C | D |
|-------------------|------------------------|----------------------------|----------------------------|---|
| S-ILS 12 | 1539-1/2 200 (200-1/2) | | | |
| S-LOC 12 | 1900-1/2 561 (600-1/2) | 1900-1 1/4 561 (600-1 1/4) | | |
| C CIRCLING | 1900-1 561 (600-1) | 2100-2 1/4 761 (800-2 1/4) | 2100-2 1/2 761 (800-2 1/2) | |

REIL Rwy 18, 30 and 36 **1**
MRL Rwy 12-30 and 18-36 **1**

FAF to MAP 6.3 NM

| | | | | | |
|---------|------|------|------|------|------|
| Knots | 60 | 90 | 120 | 150 | 180 |
| Min:Sec | 6:18 | 4:12 | 3:09 | 2:31 | 2:06 |

NC-3, 26 DEC 2024 to 23 JAN 2025

NC-3, 26 DEC 2024 to 23 JAN 2025