

WAAS CH 82233 W36A	APP CRS 001°	Rwy Idg TDZE Apt Elev	5100 1337 1339
--	------------------------	-----------------------------	---

RNAV (GPS) RWY 36

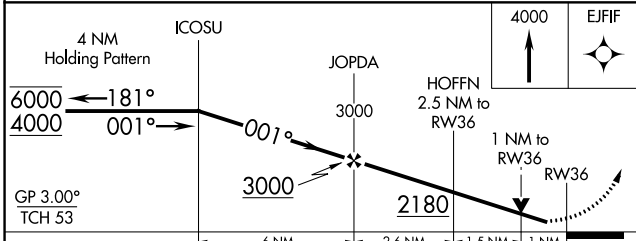
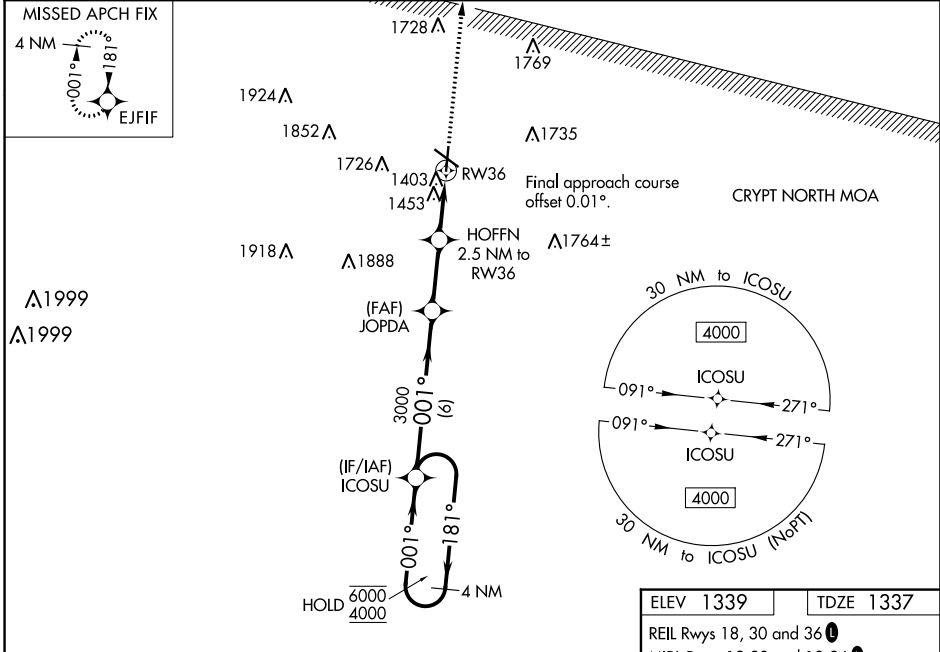
SPENCER MUNI (SPW)

RNP APCH-GPS.

⚠ Baro-VNAV and VDP NA when using Estherville altimeter setting. Rwy 36 helicopter visibility reduction below 1 SM NA. For uncompensated Baro-VNAV systems, LNAV/VNAV NA below -20° C or above 54° C. When local altimeter setting not received, use Estherville altimeter setting: increase LPV DA to 1648 feet, LNAV/VNAV DA to 1792 feet and LNAV/VNAV visibility ¼ SM; increase all MDAs 60 feet.

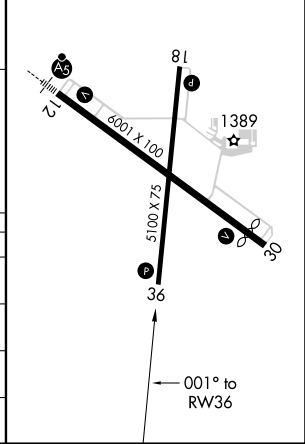
MISSED APPROACH:
Climb to 4000 direct EJFIF and hold, continue climb-in-hold to 4000.

ASOS 126.625	MINNEAPOLIS CENTER 127.75 257.7	UNICOM 123.0 (CTAF) 0
------------------------	---	---------------------------------



ELEV 1339	TDZE 1337
-----------	-----------

REIL Rwy 18, 30 and 36
MIRL Rwy 12-30 and 18-36



CATEGORY	A	B	C	D
LPV DA	1588-1	251 (300-1)		NA
LNAV/VNAV DA	1732-1½	395 (400-1½)		NA
LNAV MDA	1720-1	383 (400-1)		NA
CIRCLING	1760-1	1800-1		NA
	421 (500-1)	461 (500-1)		