

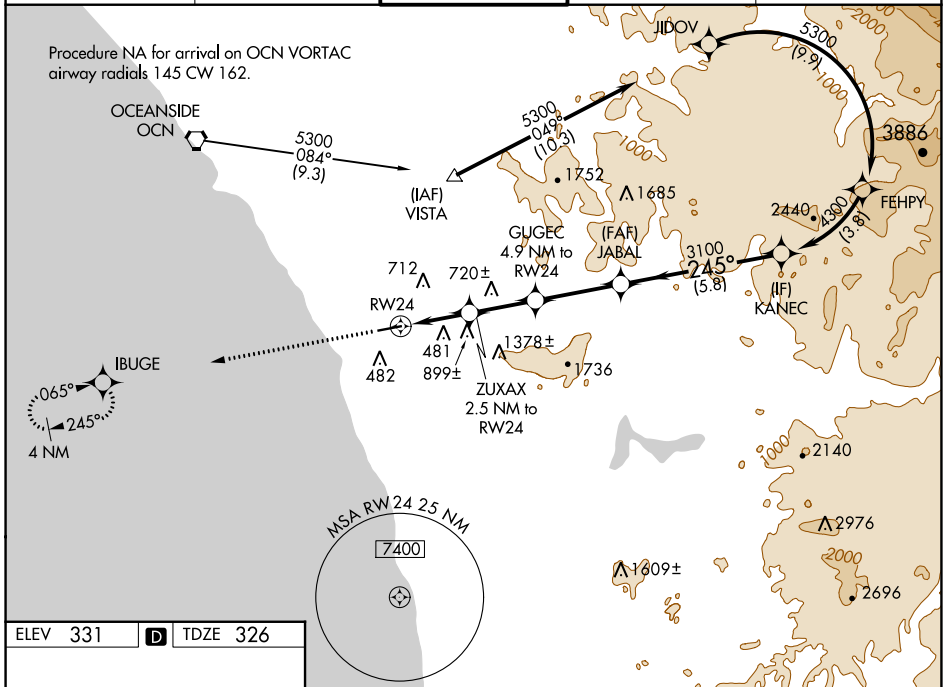
WAAS CH 45831 W24B	APP CRS 245°	Rwy Idg TDZE Apt Elev	4897 326 331
--	------------------------	-----------------------------	---

RNAV (GPS) X RWY 24

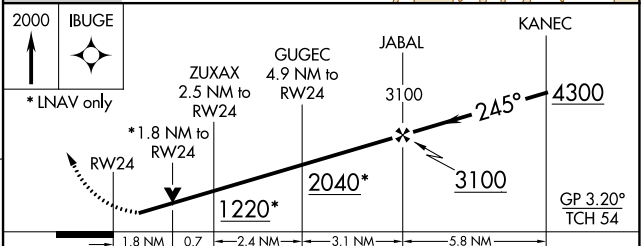
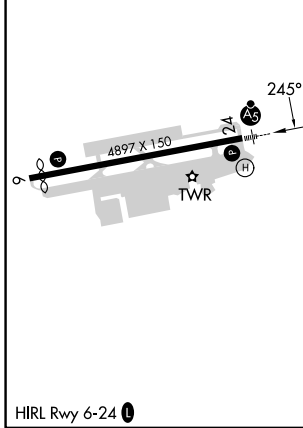
MC CLELLAN-PALOMAR (CRQ)

<p>⚠ For uncompensated Baro-VNAV systems, LNAV/VNAV NA below -4°C (25°F) or above 54°C (130°F). DME/DME RNP-0.3 NA. RF required. Rwy 24 helicopter visibility reduction below RVR 4000 NA. For inop ALS, increase LNAV/VNAV all Cats visibility to 1 7/8 SM. Increase LNAV Cats A/B visibility to RVR 5500, Cat C to 1 7/8 SM. Inop table does not apply to LPV.</p>	MALSR	MISSED APPROACH: Climb to 2000 direct IBUGE and hold.

ATIS 120.15	SOCAL APP CON 127.3 323.0	PALOMAR TOWER * 118.6 (CTAF) 0 276.4	GND CON 121.8	CLNC DEL 134.85
-----------------------	-------------------------------------	---	-------------------------	---------------------------



ELEV 331	D	TDZE 326
----------	----------	----------



CATEGORY	A	B	C	D
LPV DA	528/40	202 (200-3/4)	576/40 250 (300-3/4)	NA
LNAV/VNAV DA	927-1 1/2 601 (600-1 1/2)			NA
LNAV MDA	1000/40	674 (700-3/4)	1000-1 1/2 674 (700-1 1/2)	NA
C CIRCLING	1000-1 669 (700-1)	1020-1 689 (700-1)	1260-2 3/4 929 (1000-2 3/4)	NA

SW-3, 26 DEC 2024 to 23 JAN 2025

SW-3, 26 DEC 2024 to 23 JAN 2025