

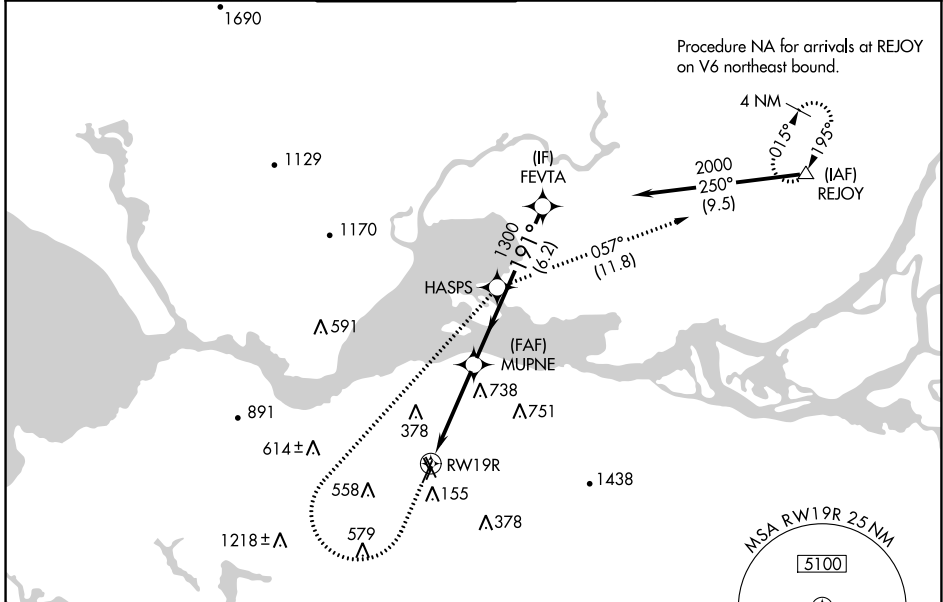
WAAS CH 86424 W19A	APP CRS 191°	Rwy Idg 4400 TDZE 22 Apt Elev 26
--	------------------------	---

RNAV (GPS) RWY 19R

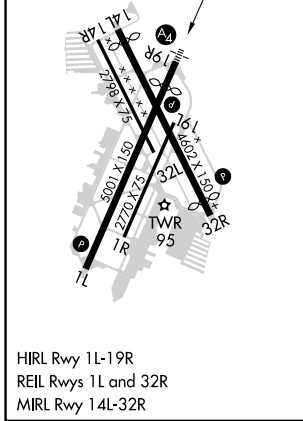
BUCHANAN FLD (CCR)

RNP APCH - GPS.	MALS	MISSED APPROACH: (Do not exceed 190K until HASPS) Climb to 500 then climbing right turn to 3000 direct HASPS then on track 057° direct REJOY and hold.
<p>⚠ Circling for Rwy 1L, 1R, 32R, 32L and 19L NA at night. Circling NA west of Rwy 1L and 19R. Rwy 19R helicopter visibility reduction below ¾ SM NA. Inop table does not apply to LPV all Cats.</p> <p>⚠ For inop ALS, increase LNAV Cat C and D visibility to 3 SM.</p>		

ATIS 124.7	TRAVIS APP CON 119.9 322.325	CONCORD TOWER* 119.7 (CTAF) 257.8	GND CON 121.9	CLNC DEL 118.75	UNICOM 122.95
----------------------	--	---	-------------------------	---------------------------	-------------------------



ELEV 26	D	TDZE 22
---------	----------	---------



500	3000	HASPS	tr 057°	REJOY	VGSI and RNAV glidepath not coincident (VGSI Angle 3.00/TCH 22).
					FEVTA
					GP 3.00° TCH 45
CATEGORY	A	B	C	D	
LPV DA	298-¾		276 (300-¾)		
LNAV MDA	980-1 958 (1000-1)	980-1¼ 958 (1000-1¼)	980-2½ 958 (1000-2½)		
C CIRCLING	980-1¼ 954 (1000-1¼)	980-1½ 954 (1000-1½)	980-3 954 (1000-3)	1300-3 1274 (1300-3)	

SW-2, 26 DEC 2024 to 23 JAN 2025

SW-2, 26 DEC 2024 to 23 JAN 2025