

VOR/DME CCR <b>117.0</b> Chan 117	APP CRS <b>172°</b>	Rwy Idg TDZE <b>22</b> Apt Elev <b>26</b>	<b>4400</b>
---	------------------------	---	-------------

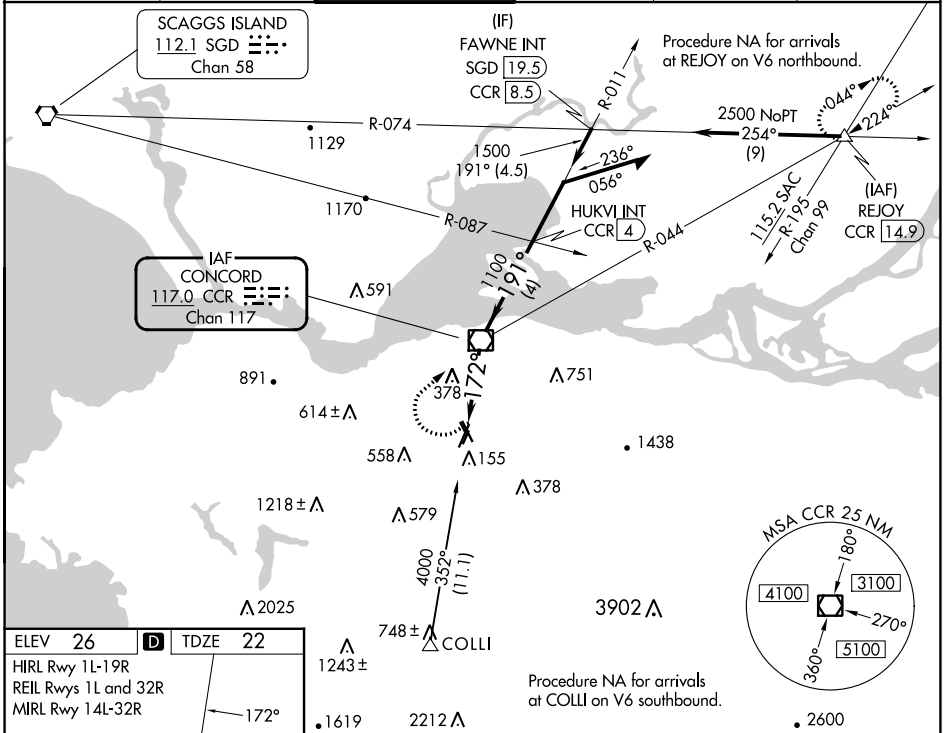
# VOR RWY 19R

BUCHANAN FLD (CCR)

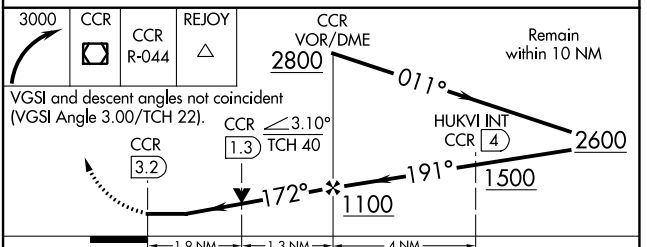
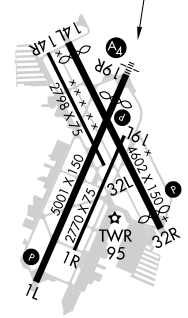
**⚠** Inop table does not apply. Circling NA west of Rwy 1L-19R. Circling Rwy 1L, 1R, 19L, 32L, 32R NA at night. Rwy 19R helicopter visibility reduction below 3/4 SM NA. DME required.

**MALS** MISSED APPROACH: Climbing right turn to 3000 direct CCR VOR/DME then on CCR VOR/R-044 to REJOY/CCR 14.9 DME and hold. \* Missed approach requires minimum climb of 320 feet per NM to 1700.

ATIS <b>124.7</b>	TRAVIS APP CON <b>119.9 322.325</b>	CONCORD TOWER ★ <b>119.7 (CTAF) 257.8</b>	GND CON <b>121.9</b>	CLNC DEL <b>118.75</b>	UNICOM <b>122.95</b>
----------------------	--	--	-------------------------	---------------------------	-------------------------



ELEV 26	<b>D</b>	TDZE 22
HIRL Rwy 1L-19R REIL Rwy 1L and 32R MIRL Rwy 14L-32R		



CATEGORY	A	B	C	D
S-19R*	640-1	618 (700-1)	640-1 3/4	618 (700-1 3/4)
S-19R	1020-1 1/4 998 (1000-1 1/4)	1020-1 1/2 998 (1000-1 1/2)	1020-3	998 (1000-3)
<b>C</b> CIRCLING	1020-1 1/4 994 (1000-1 1/4)	1020-1 1/2 994 (1000-1 1/2)	1020-3 994 (1000-3)	NA

SW-2, 26 DEC 2024 to 23 JAN 2025

SW-2, 26 DEC 2024 to 23 JAN 2025