

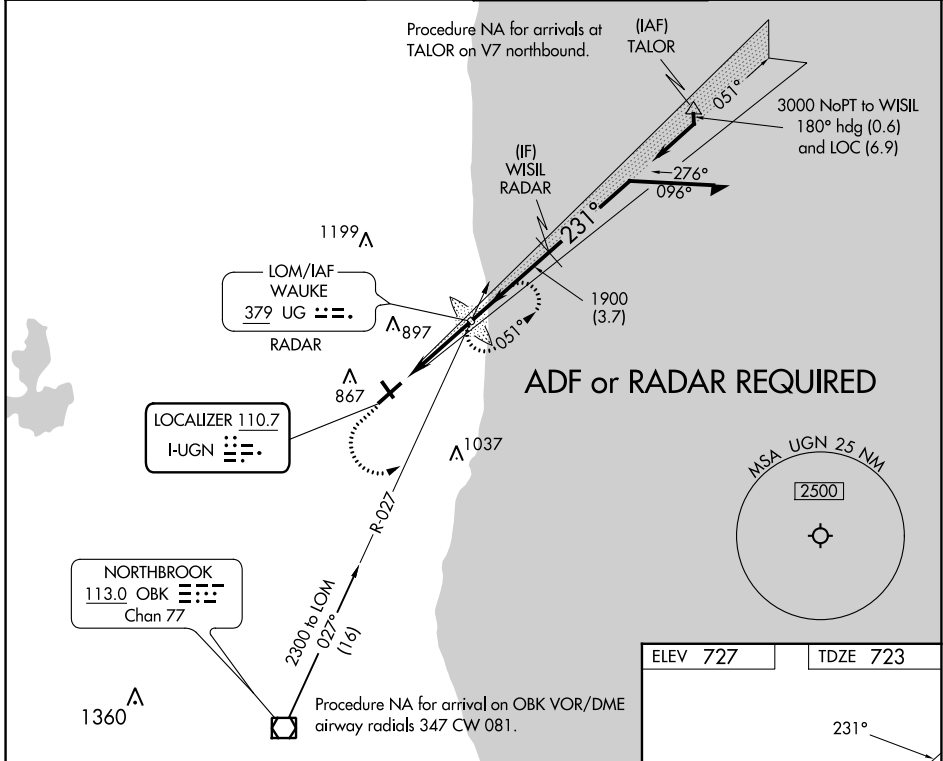
LOC I-UGN 110.7	APP CRS 231°	Rwy Idg TDZE Apt Elev 6001 723 727
---------------------------	------------------------	--

ILS or LOC RWY 23

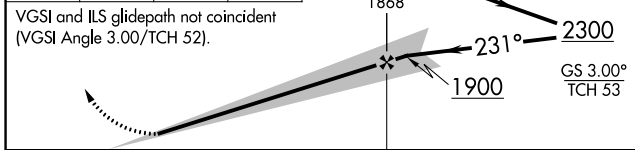
WAUKEGAN NTL (UGN)

		MISSED APPROACH: Climb to 1600 then climbing left turn to 2300 to intercept OBK VOR/DME R-027 to WAUKE LOM/RADAR and hold.
--	--	---

ATIS 132.4	CHICAGO APP CON 120.55	WAUKEGAN TOWER ★ 120.05 (CTAF) 273.55	GND CON 121.65
----------------------	----------------------------------	---	--------------------------



1600	2300	OBK R-027	UG	WAUKE LOM/RADAR	Remain within 10 NM
------	------	-----------	----	-----------------	---------------------



CATEGORY	A	B	C	D
S-ILS 23		923-1/2	200 (200-1/2)	
S-LOC 23		1040-1/2	317 (400-1/2)	
CIRCLING	1220-1	493 (500-1)	1220-1 1/2 493 (500-1/2)	1400-2 1/4 673 (700-2 1/4)

ELEV 727	TDZE 723
----------	----------

REIL Rwy 5

HIRL Rwy 5-23

MIRL Rwy 14-32

FAF to MAP 3.4 NM

Knots: 60, 90, 120, 150, 180

Min:Sec: 3:24, 2:16, 1:42, 1:21, 1:08

EC-3, 26 DEC 2024 to 23 JAN 2025

EC-3, 26 DEC 2024 to 23 JAN 2025