

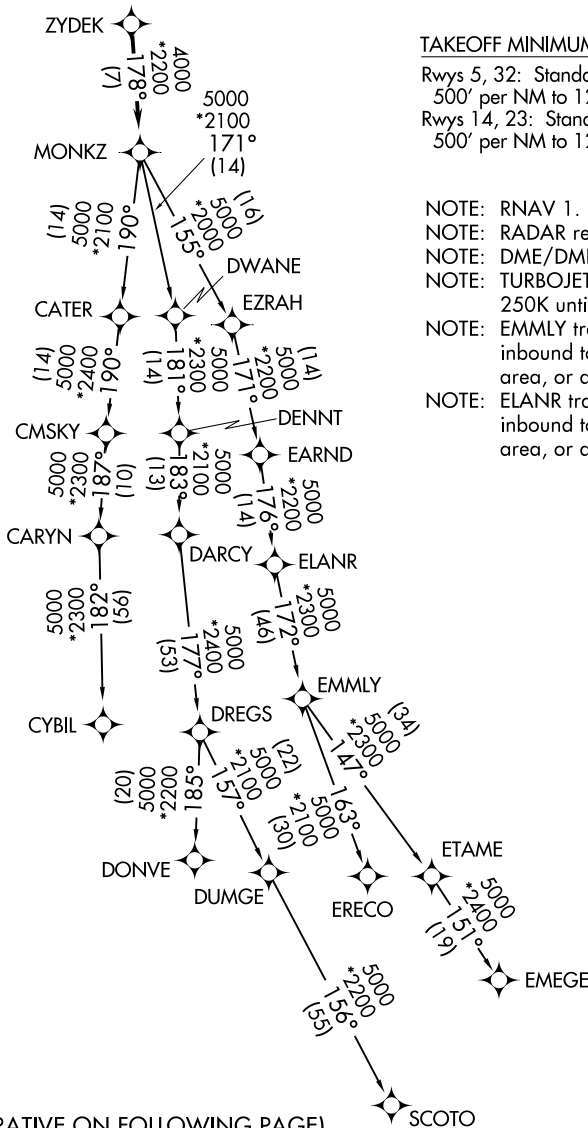
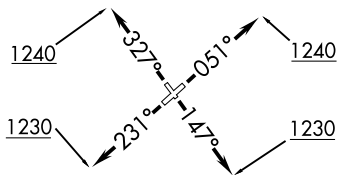
(MONKZ5.MONKZ) 21112
MONKZ FIVE DEPARTURE (RNAV)

AL-5324 (FAA)

WAUKEGAN NTL (UGN)
 CHICAGO/WAUKEGAN, ILLINOIS

**TOP ALTITUDE:
 3000**

ATIS
 132.4
 GND CON
 121.65
 WAUKEGAN TOWER★
 120.05 273.55
 DEP CON
 120.55



TAKEOFF MINIMUMS

Rwys 5, 32: Standard with minimum climb of 500' per NM to 1240.
 Rwys 14, 23: Standard with minimum climb of 500' per NM to 1230.

- NOTE: RNAV 1.
- NOTE: RADAR required.
- NOTE: DME/DME/IRU or GPS required.
- NOTE: TURBOJET departures maintain 250K until advised by ATC.
- NOTE: EMMLY transition: For aircraft inbound to Indianapolis Terminal area, or as assigned by ATC.
- NOTE: ELANR transition: For aircraft inbound to Cincinnati Terminal area, or as assigned by ATC.

(NARRATIVE ON FOLLOWING PAGE)

NOTE: Chart not to scale.

MONKZ FIVE DEPARTURE (RNAV)
 (MONKZ5.MONKZ) 01FEB18

CHICAGO/WAUKEGAN, ILLINOIS
 WAUKEGAN NTL (UGN)

EC-3, 26 DEC 2024 to 23 JAN 2025

EC-3, 26 DEC 2024 to 23 JAN 2025