

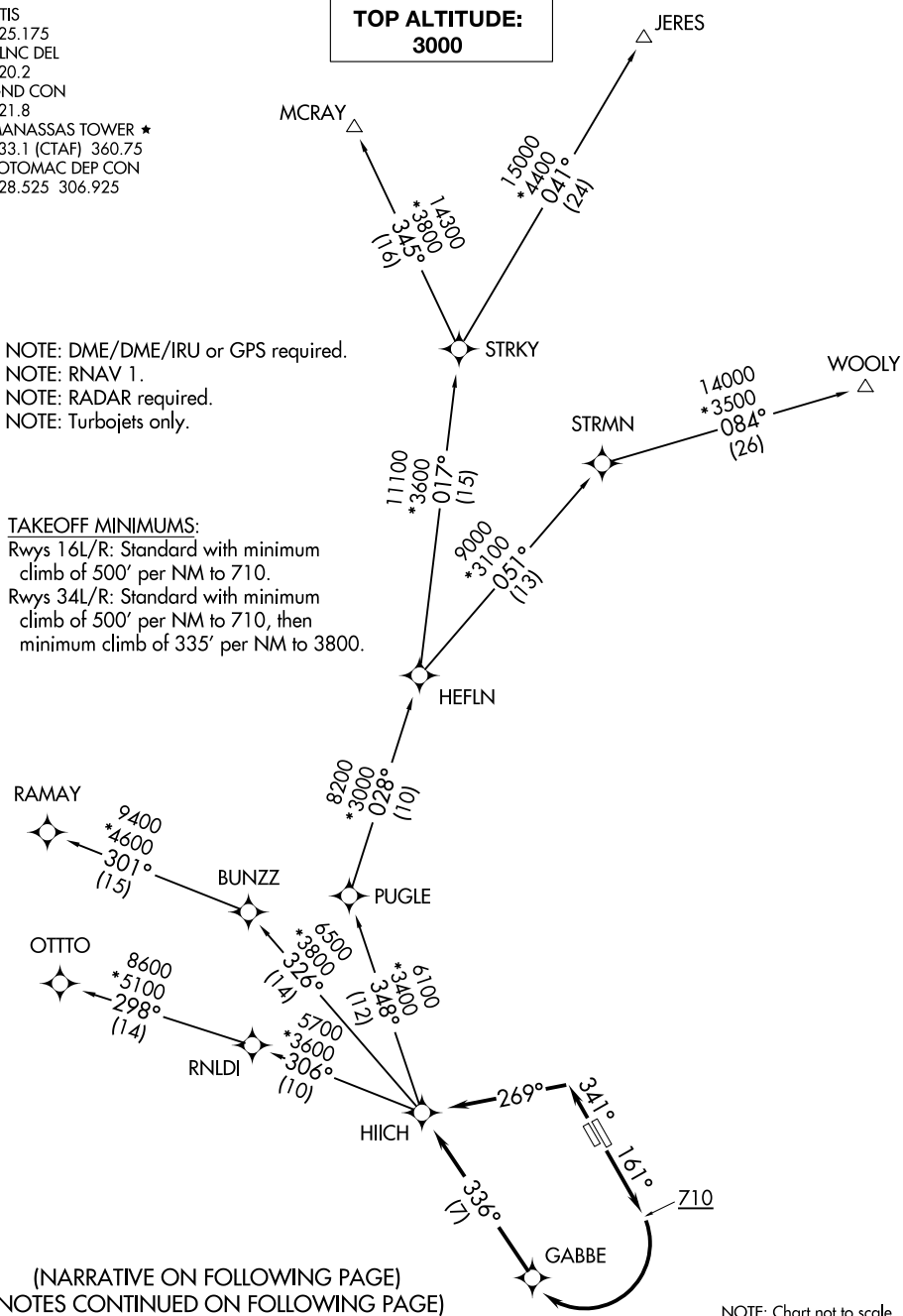
ATIS 125.175  
CLNC DEL 120.2  
GND CON 121.8  
MANASSAS TOWER ★ 133.1 (CTAF) 360.75  
POTOMAC DEP CON 128.525 306.925

**TOP ALTITUDE:  
3000**

NOTE: DME/DME/IRU or GPS required.  
NOTE: RNAV 1.  
NOTE: RADAR required.  
NOTE: Turbojets only.

**TAKEOFF MINIMUMS:**

Rwys 16L/R: Standard with minimum climb of 500' per NM to 710.  
Rwys 34L/R: Standard with minimum climb of 500' per NM to 710, then minimum climb of 335' per NM to 3800.



(NARRATIVE ON FOLLOWING PAGE)  
(NOTES CONTINUED ON FOLLOWING PAGE)

NOTE: Chart not to scale.

NE-3, 26 DEC 2024 to 23 JAN 2025

NE-3, 26 DEC 2024 to 23 JAN 2025