

WAAS CH 82508 W14A	APP CRS 142°	Rwy Idg 4755 TDZE 23 Apt Elev 23
--	------------------------	---

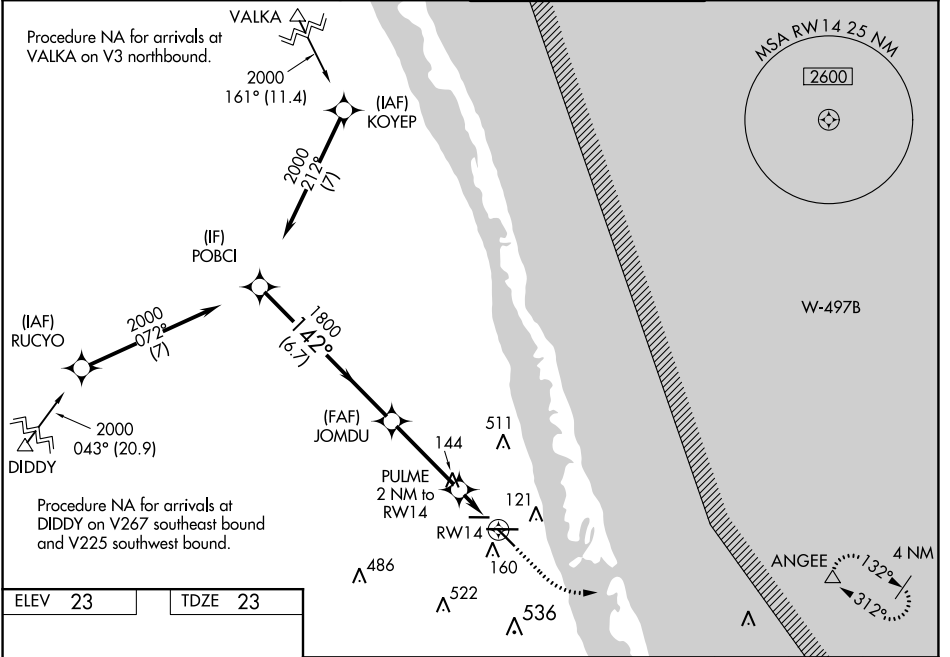
RNAV (GPS) RWY 14

TREASURE COAST INTL (FPR)

⚠ Baro-VNAV NA when using Vero Beach altimeter setting. For uncompensated Baro-VNAV systems, LNAV/VNAV NA below -15°C (5°F) or above 43°C (109°F). When VGSI inop, Straight-in/Circling Rwy 14 procedure NA at night. DME/DME RNP-0.3 NA. Helicopter visibility below 1 SM NA. When local altimeter setting not received, use Vero Beach altimeter setting and increase LPV DA to 303, LNAV/VNAV DA to 378 and all MDA 40 feet; increase LNAV visibility Cats C/D ½ SM; increase Circling visibility Cat C/D ¼ SM.

⚠ MISSED APPROACH: Climb to 480 then climbing left turn to 2000 direct ANGEE and hold.

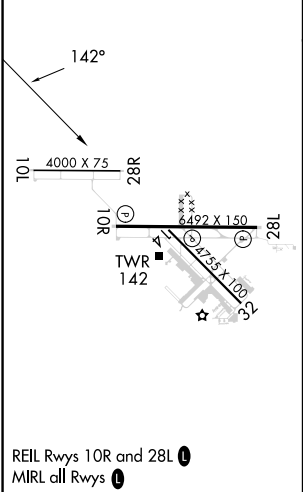
ATIS 134.825	PALM BEACH APP CON 132.8	FORT PIERCE TOWER* 128.2 (CTAF) 0	GND CON (GCO) 119.55
------------------------	------------------------------------	---	--------------------------------



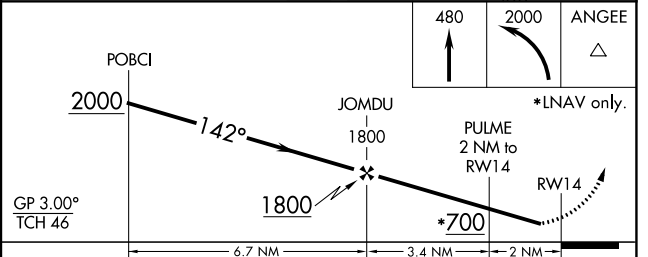
SE-3, 26 DEC 2024 to 23 JAN 2025

SE-3, 26 DEC 2024 to 23 JAN 2025

ELEV 23	TDZE 23
---------	---------



REIL Rwy 10R and 28L **0**
MIRL all Rwy 14 **0**



CATEGORY	Distance from RWY 14			
	A	B	C	D
LPV DA		280-1	257 (300-1)	
LNAV/VNAV DA		355-1½	332 (400-1½)	
LNAV MDA		400-1	377 (400-1)	
CIRCLING	460-1	480-1	880-2½	880-2¾
	437 (500-1)	457 (500-1)	857 (900-2½)	857 (900-2¾)