

VOR/DME IMT 111.2 Chan 49	APP CRS 323°	Rwy Idg 3810 TDZE 1131 Apt Elev 1182
---	------------------------	---

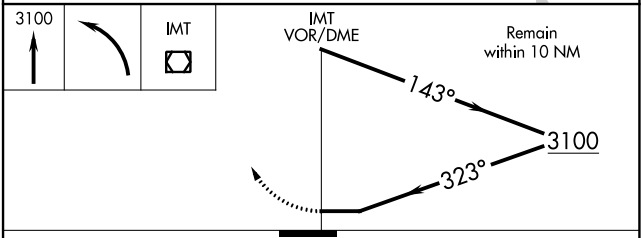
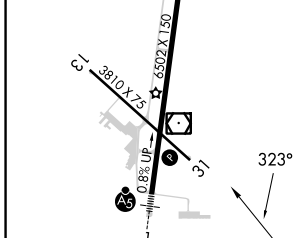
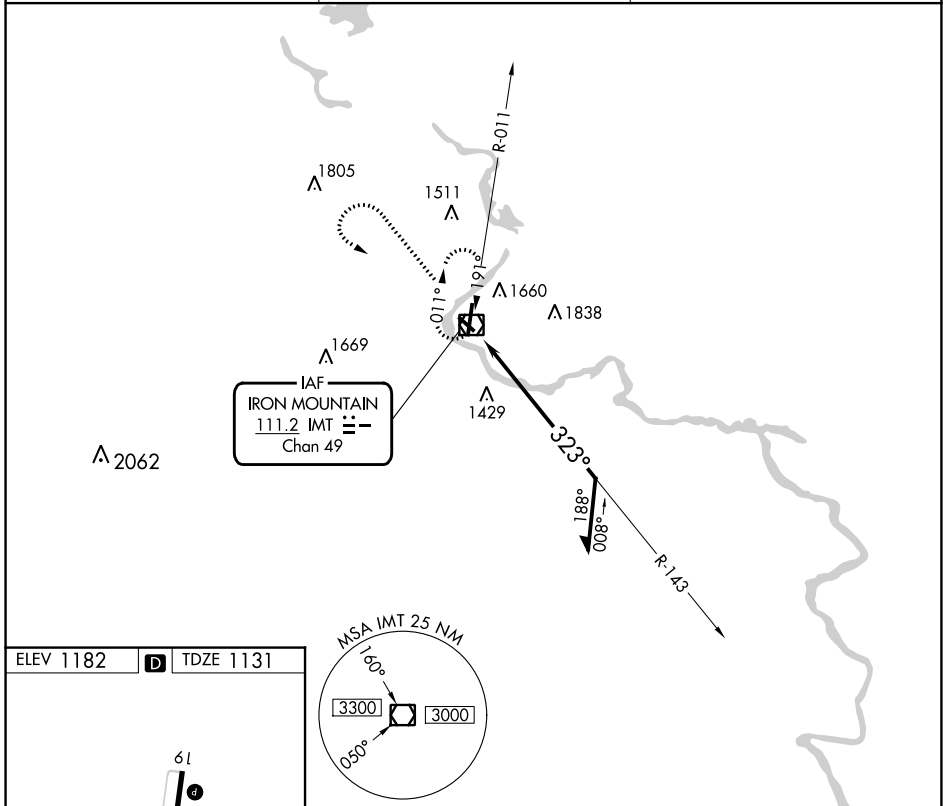
VOR RWY 31

FORD (IMT)

▼ Circling NA northeast of Rwy 19 and 31. Rwy 31 helicopter visibility reduction below 1 SM NA.
▲ Straight-in Rwy 31 NA at night, Circling Rwy 13, 31 NA at night.

MISSED APPROACH: Climb to 3100 then left turn direct IMT VOR/DME and hold.

ASOS 119.025	MINNEAPOLIS CENTER 121.25 322.5	UNICOM 122.8 (CTAF) 1
------------------------	---	--



ELEV 1182	D	TDZE 1131															
<table border="1"> <thead> <tr> <th>CATEGORY</th> <th>A</th> <th>B</th> <th>C</th> <th>D</th> </tr> </thead> <tbody> <tr> <td>S-31</td> <td>1760-1</td> <td>629 (600-1)</td> <td>1760-1¾ 629 (600-1¾)</td> <td>1760-2 629 (600-2)</td> </tr> <tr> <td>C CIRCLING</td> <td>1760-1 578 (600-1)</td> <td>1780-1 598 (600-1)</td> <td>1780-1¾ 598 (600-1¾)</td> <td>1840-2 658 (700-2)</td> </tr> </tbody> </table>			CATEGORY	A	B	C	D	S-31	1760-1	629 (600-1)	1760-1¾ 629 (600-1¾)	1760-2 629 (600-2)	C CIRCLING	1760-1 578 (600-1)	1780-1 598 (600-1)	1780-1¾ 598 (600-1¾)	1840-2 658 (700-2)
CATEGORY	A	B	C	D													
S-31	1760-1	629 (600-1)	1760-1¾ 629 (600-1¾)	1760-2 629 (600-2)													
C CIRCLING	1760-1 578 (600-1)	1780-1 598 (600-1)	1780-1¾ 598 (600-1¾)	1840-2 658 (700-2)													

EC-1, 26 DEC 2024 to 23 JAN 2025

EC-1, 26 DEC 2024 to 23 JAN 2025