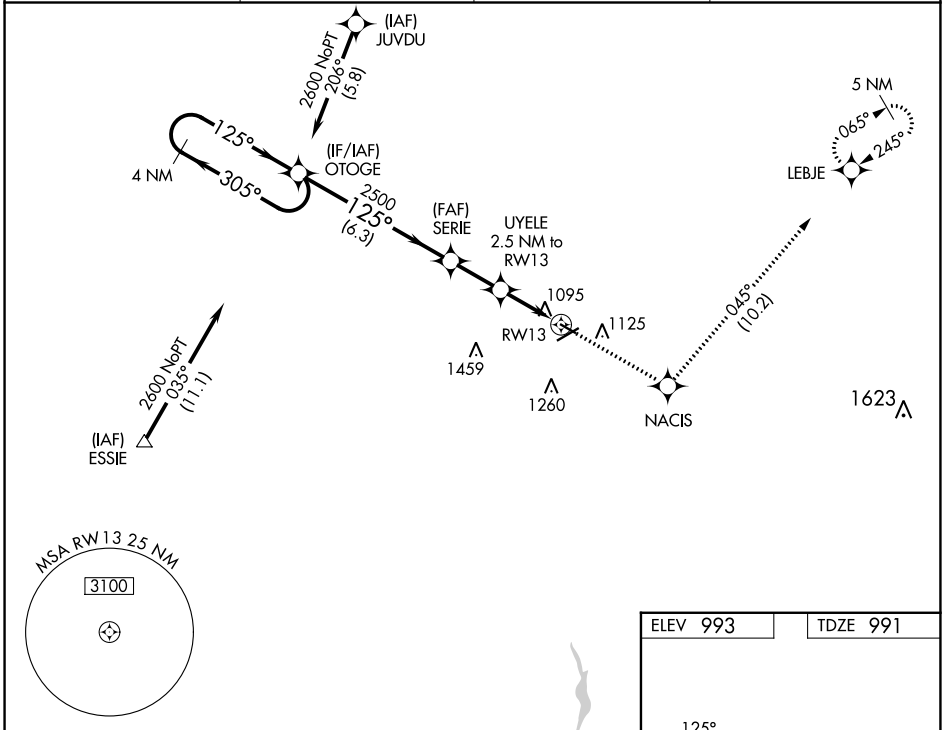


APP CRS	Rwy Idg	<b>3498</b>
<b>125°</b>	TDZE	<b>991</b>
	Apt Elev	<b>993</b>

# RNAV (GPS) RWY 13

MARION MUNI (MNN)

RNP APCH.		MISSED APPROACH: Climb to 3000 direct NACIS and on track 045° to LEBJE and hold.	
<p>▼ Rwy 13 helicopter visibility reduction below ¾ SM NA. VDP NA when using Ohio State University altimeter setting. When local altimeter setting not received, use Ohio State University altimeter setting: increase all MDAs 100 feet and visibility Cat C/D ¾ SM.</p>			
ASOS	CLEVELAND APP CON *	CLNC DEL	UNICOM
<b>119.975</b>	<b>128.35 360.65</b>	<b>126.8</b>	<b>122.8 (CTAF) 0</b>



EC-2, 26 DEC 2024 to 23 JAN 2025

EC-2, 26 DEC 2024 to 23 JAN 2025

VGSi and descent angles not coincident (VGSi Angle 3.00/TCH 21).		3000	NACIS	tr 045°	LEBJE
4 NM Holding Pattern		OTOGE	SERIE	UYELE 2.5 NM to RWY 13	
2600 ← 305°		→ 125°	→ 125°	3.04° TCH 40	1.1 NM to RWY 13
		2500	1800		RWY 13
		6.3 NM	2.1 NM	1.4 NM	1.1
CATEGORY	A	B	C	D	
LNVA MDA	1360-1 369 (400-1)		1360-1¼ 369 (400-1¼)		
CIRCLING	1480-1 487 (500-1)	1500-1 507 (600-1)	1700-2 707 (800-2)	1820-2¾ 827 (900-2¾)	REIL Rwys 7, 13, 25 and 31 0 MIRL Rwys 7-25 and 13-31 0

