

WAAS CH 90206 W24A	APP CRS 236°	Rwy Idg 4868 TDZE 308 Apt Elev 310
--	------------------------	---

RNAV (GPS) RWY 24

CRISP COUNTY-CORDELE (CKF)

RNP APCH-GPS.

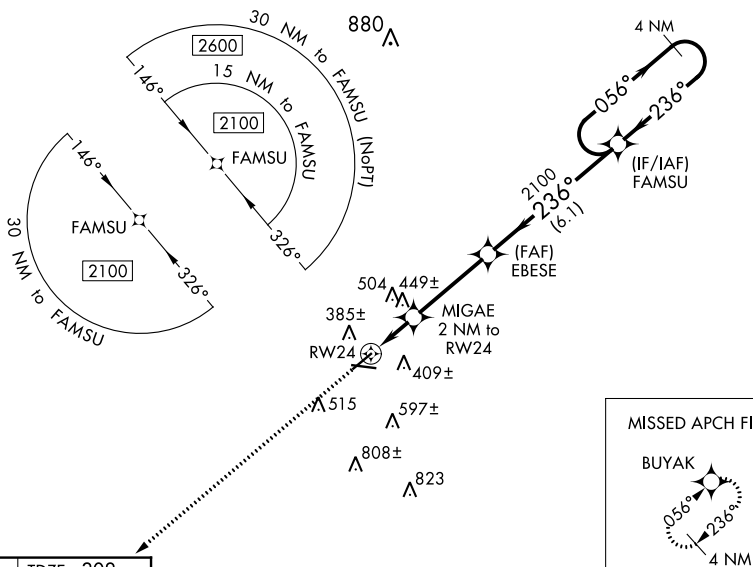
⚠ For uncompensated Baro-VNAV systems, LNAV/VNAV NA below -15°C or above 54°C. Rwy 24 helicopter visibility reduction below 3/4 SM NA. Straight-in Rwy 24 NA at night, Circling Rwy 6, 24, 28 NA at night.

MISSED APPROACH: Climb to 2100 direct BUYAK and hold.

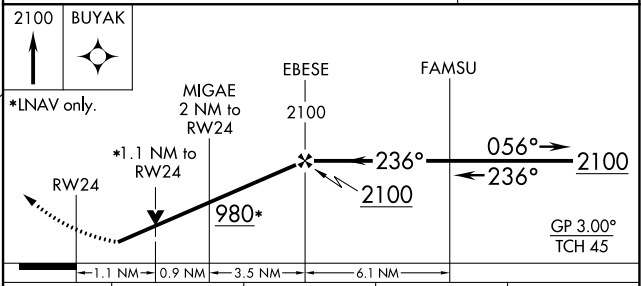
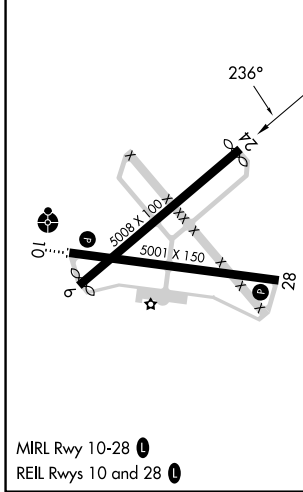
AWOS-3PT
119,325

JACKSONVILLE CENTER
125.75 363,075

UNICOM
123,050 (CTAF) 0



ELEV 310	TDZE 308
-----------------	-----------------



CATEGORY	A	B	C	D
LPV DA		583-1	275 (300-1)	
LNAV/VNAV DA		584-1	276 (300-1)	
LNAV MDA	700-1	392 (400-1)	700-1 1/8	392 (400-1 1/8)
C CIRCLING	820-1	510 (600-1)	1080-2 1/4 770 (800-2 1/4)	1160-2 3/4 850 (900-2 3/4)

SE-4, 26 DEC 2024 to 23 JAN 2025

SE-4, 26 DEC 2024 to 23 JAN 2025