

WAAS CH <b>42915</b> <b>W01A</b>	APP CRS <b>006°</b>	Rwy Idg <b>5201</b> TDZE <b>915</b> Apt Elev <b>925</b>
--	------------------------	---

# RNAV (GPS) RWY 1

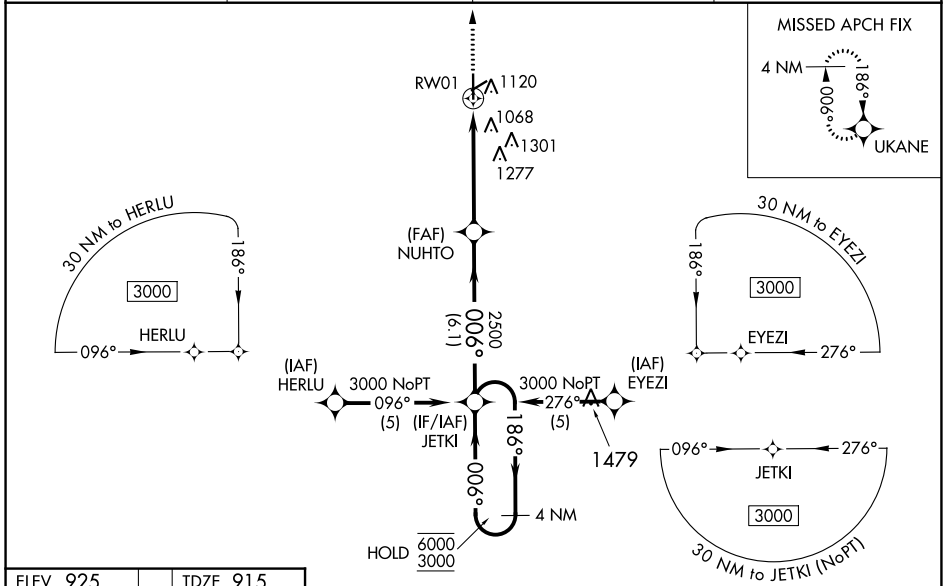
KIRSCH MUNI (IRS)

RNP APCH - GPS.

⚠ Circling Rwy 6 NA at night. Rwy 1 helicopter visibility reduction below  $\frac{3}{4}$  SM NA. For uncompensated Baro-VNAV systems, LNAV/VNAV NA below -16°C or above 47°C. When local altimeter setting not received, use Three Rivers altimeter setting and increase LPV DA to 1219 feet; increase LNAV/VNAV DA to 1395 feet and all visibilities  $\frac{1}{2}$  SM. Increase all MDAs 60 feet and LNAV visibility Cat C/D  $\frac{1}{2}$  SM, and Circling visibility Cat C/D  $\frac{1}{4}$  SM. VDP NA when using Three Rivers altimeter setting. Baro-VNAV NA when using Three Rivers altimeter setting.

MISSED APPROACH:  
Climb to 2500 direct UKANE and hold.

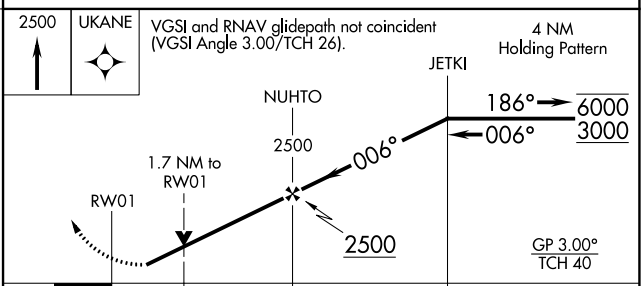
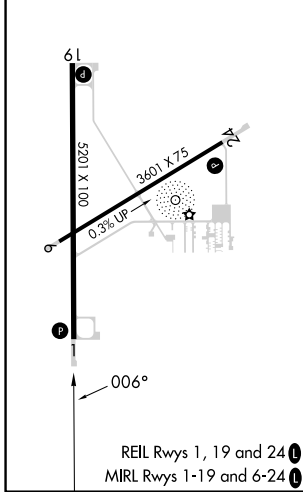
AWOS-3 <b>121.325</b>	GREAT LAKES APP CON * <b>121.2 239.25</b>	CLNC DEL <b>118.325</b>	UNICOM <b>123.05</b> (CTAF) <b>0</b>
--------------------------	--	----------------------------	---



EC-1, 26 DEC 2024 to 23 JAN 2025

EC-1, 26 DEC 2024 to 23 JAN 2025

ELEV 925	TDZE 915
----------	----------



CATEGORY	A	B	C	D
LPV DA		1178- $\frac{7}{8}$	263 (300- $\frac{7}{8}$ )	
LNAV/VNAV DA		1354-1 $\frac{1}{4}$	439 (500-1 $\frac{1}{4}$ )	
LNAV MDA	1480-1	565 (600-1)	1480-1 $\frac{1}{8}$	565 (600-1 $\frac{1}{8}$ )
CIRCLING	1480-1	555 (600-1)	1620-2 695 (700-2)	1620-2 $\frac{1}{4}$ 695 (700-2 $\frac{1}{4}$ )