


LOM SH <b>375</b>	APP CRS <b>047°</b>	Rwy Idg TDZE Apt Elev	<b>6002</b> <b>1184</b> <b>1201</b>
----------------------	------------------------	-----------------------------	---

AL-5369 (FAA)

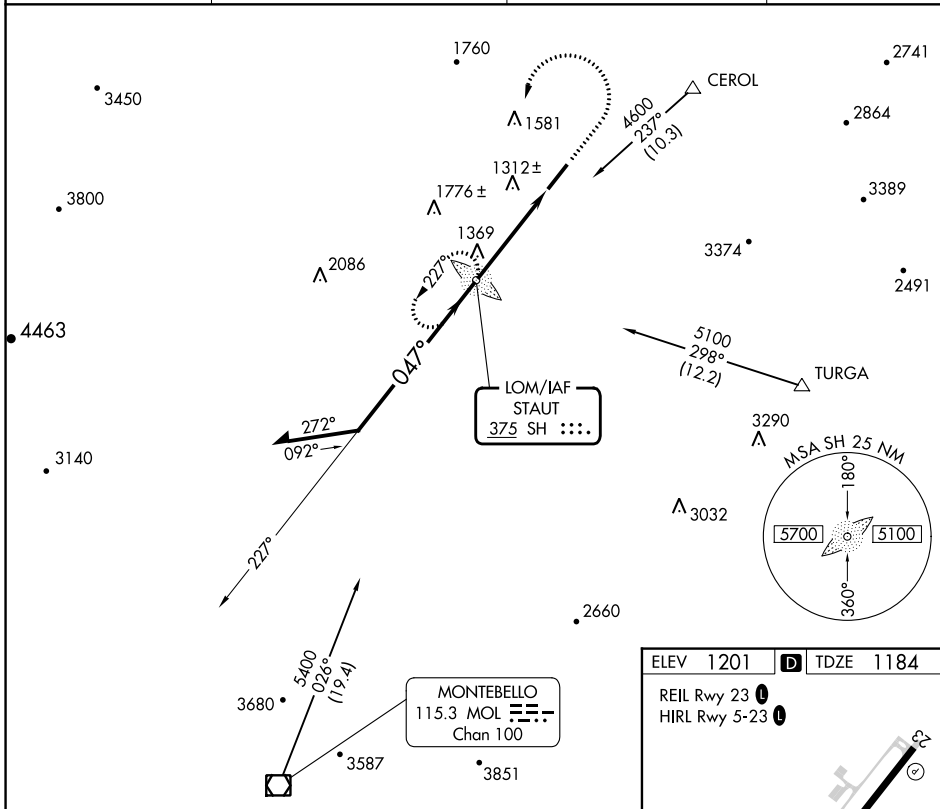
# NDB RWY 5

SHENANDOAH VALLEY RGNL (SHD)

**⚠** When local altimeter setting not received, use Charlottesville altimeter setting and increase all MDAs 140 feet and visibility S-5 and Circling Cat C ½ SM, Cat D ¼ SM.

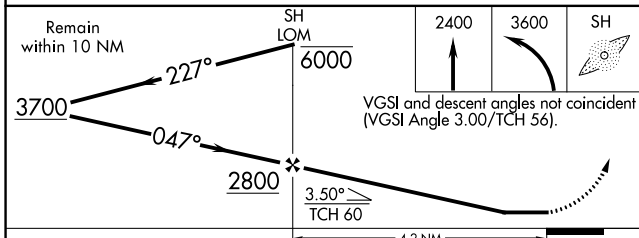
**MALSR**  MISSED APPROACH: Climb to 2400 then climbing left turn to 3600 direct SH LOM and hold.

AWOS-3 <b>124.925</b>	POTOMAC APP CON <b>132.85 323.125</b>	CLNC DEL <b>118.35</b>	UNICOM <b>123.0 (CTAF) 0</b>
--------------------------	--	---------------------------	---------------------------------



NE-3, 26 DEC 2024 to 23 JAN 2025

NE-3, 26 DEC 2024 to 23 JAN 2025



ELEV 1201 **D** TDZE 1184

REIL Rwy 23 **0**  
HIRL Rwy 5-23 **0**

FAF to MAP 4.2 NM

Knots	60	90	120	150	180
Min:Sec	4:12	2:48	2:06	1:41	1:24

CATEGORY	A	B	C	D
S-5	1760-¾ 576 (600-¾)		1760-1 576 (600-1)	1760-1½ 576 (600-1½)
CIRCLING	1760-1 559 (600-1)		1900-2 699 (700-2)	2060-2¾ 859 (900-2¾)