

WAAS CH 78113 W23A	APP CRS 227°	Rwy Idg TDZE Apt Elev	6002 1201 1201
--	------------------------	-----------------------------	---

AL-5369 (FAA)

RNAV (GPS) RWY 23

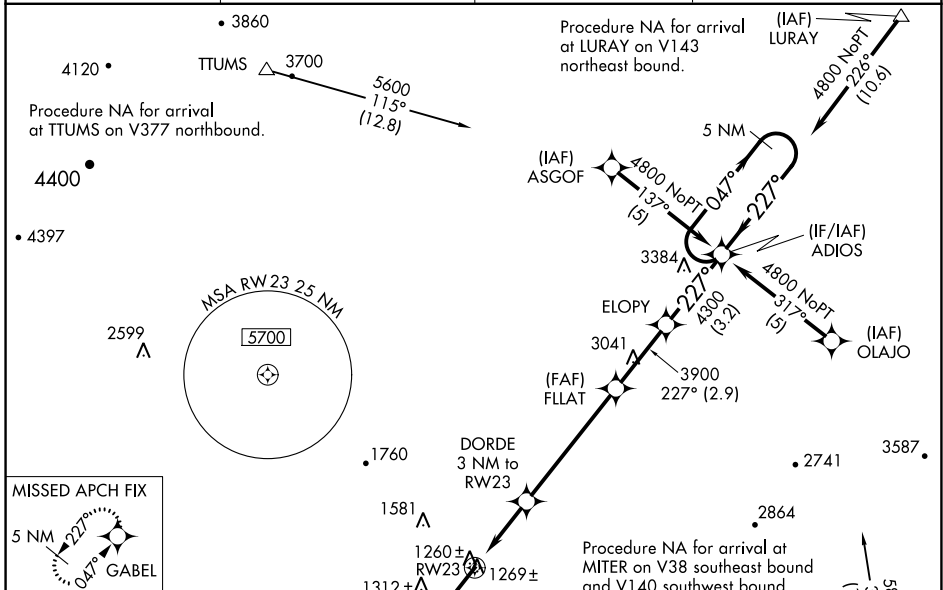
SHENANDOAH VALLEY RGNL (SHD)

RNP APCH - GPS.

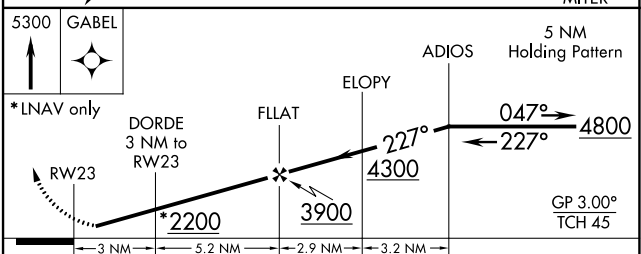
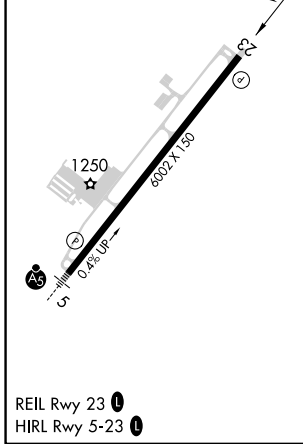
Baro-VNAV NA when using Charlottesville altimeter setting. For uncompensated Baro-VNAV systems, LNAV/VNAV NA below -17°C or above 54°C. Visibility reduction by helicopters NA. When local altimeter setting not received, use Charlottesville altimeter setting and increase all DA 130 feet and all MDA 140 feet. Increase LPV and LNAV/VNAV all Cats visibility ¼ SM, LNAV Cat C visibility ¼ SM, LNAV Cat D ½ SM, Circling Cat C ½ SM and Cat D ¼ SM.

MISSED APPROACH: Climb to 5300 direct GABEL and hold, continue climb-in-hold to 5300.

AWOS-3 124.925	POTOMAC APP CON 132.85 323.125	CLNC DEL 118.35	UNICOM 123.0 (CTAF) 0
--------------------------	--	---------------------------	---------------------------------



ELEV 1201	D	TDZE 1201
-----------	----------	-----------



CATEGORY	A	B	C	D
LPV DA		1451-¾	250 (300-¾)	
LNAV/VNAV DA		1530-1	329 (400-1)	
LNAV MDA		1580-1	379 (400-1)	
CIRCLING	1660-1	1760-1	1900-2	2060-2¾
	459 (500-1)	559 (600-1)	699 (700-2)	859 (900-2¾)

NE-3, 26 DEC 2024 to 23 JAN 2025

NE-3, 26 DEC 2024 to 23 JAN 2025