

WAAS CH 86904 W23A	APP CRS 230°	Rwy Idg TDZE Apt Elev	5500 185 192
--	------------------------	-----------------------------	---

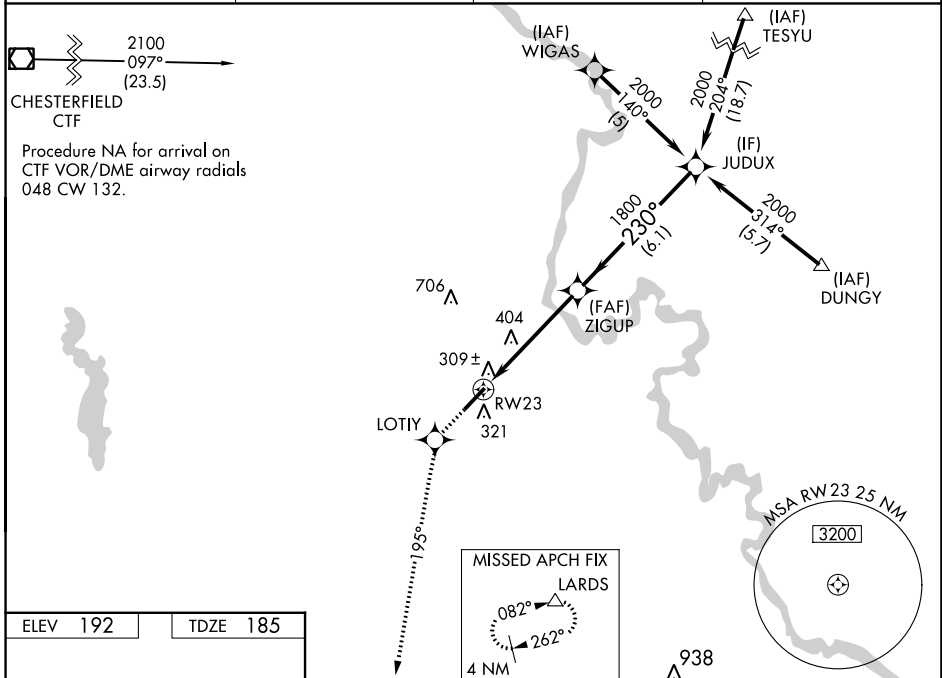
RNAV (GPS) RWY 23

DARLINGTON COUNTY (UDG)

⚠ For uncompensated Baro-VNAV systems, LNAV/VNAV NA below -15°C (5°F) or above 48°C (118°F). When local altimeter setting not received, use Florence altimeter setting: increase LPV DA to 527 feet and all visibilities ¼ SM; increase LNAV/VNAV DA to 627 feet; increase all MDAs 60 feet and visibility Cat D ¼ SM. DME/DME RNP-0.3 NA. Helicopter visibility reduction below ¾ SM NA. Baro-VNAV NA when using Florence altimeter setting.

MISSED APPROACH: Climb to 2000 direct LOTIY and via 195° track to LARDS and hold.

AWOS-3PT 119.925	FLORENCE APP CON ★ 118.6 341.7	CLNC DEL 118.55	UNICOM 123.0 (CTAF) 0
----------------------------	--	---------------------------	---------------------------------



ELEV 192	TDZE 185
----------	----------

	2000	LOTIY	tr 195°	LARDS	JUDUX	2000
	*LNAV only.		*1.5 NM to RW23		ZIGUP	Procedure Turn NA
	1.5	3.4 NM	6.1 NM			GP 3.00° TCH 40
CATEGORY	A		B		C	D
LPV DA	479-1		294 (300-1)			
LNAV/VNAV DA	579-1½		394 (400-1½)			
LNAV MDA	700-1	515 (600-1)	700-1½	515 (600-1½)	700-1¾	515 (600-1¾)
CIRCLING	700-1	508 (600-1)	720-1½	528 (600-1½)	1020-2¾	828 (900-2¾)

SE-2, 26 DEC 2024 to 23 JAN 2025

SE-2, 26 DEC 2024 to 23 JAN 2025