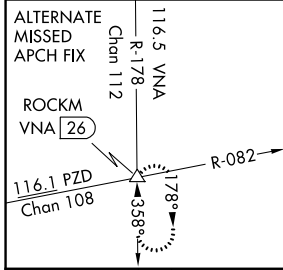
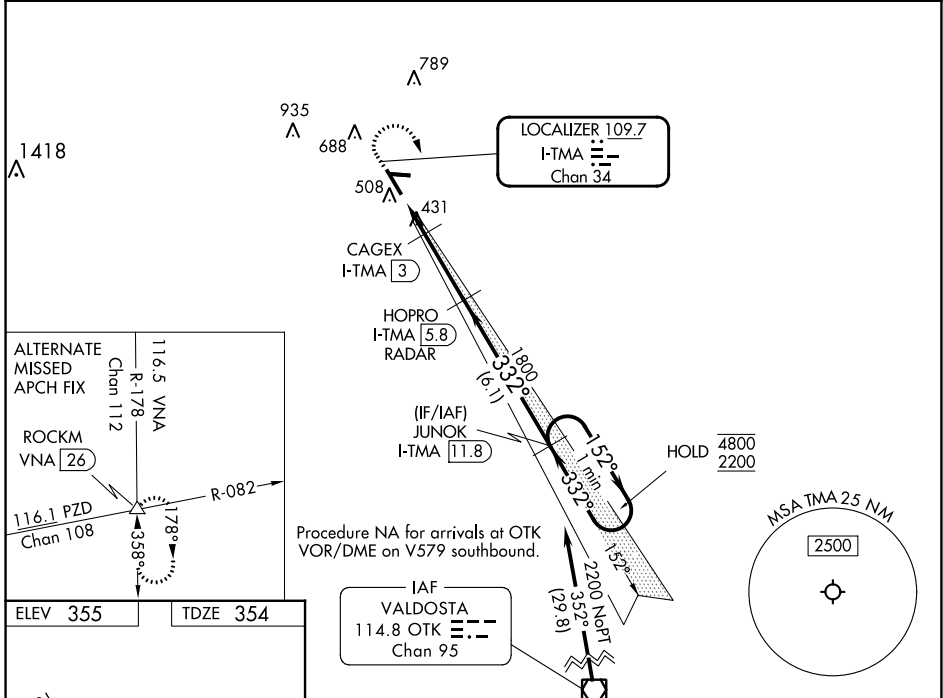


LOC/DME I-TMA	APP CRS	Rwy Idg	<b>6506</b>
<b>109.7</b>	<b>332°</b>	TDZE	<b>354</b>
Chan <b>34</b>		Apt Elev	<b>355</b>

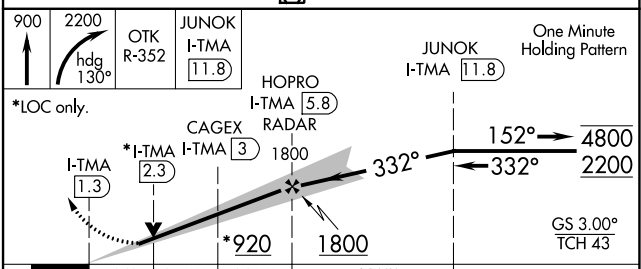
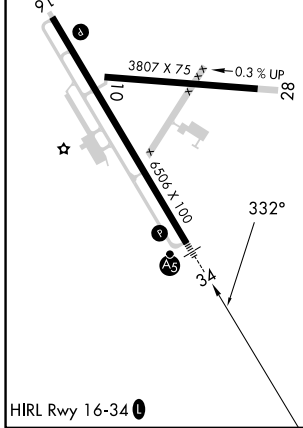
# ILS or LOC RWY 34

HENRY TIFT MYERS (TMA)

DME required.		MALSR	MISSED APPROACH: Climb to 900 then climbing right turn to 2200 on heading 130° and OTK VOR/DME R-352 to JUNOK/I-TMA 11.8 DME and hold.
<p>NA Circling Rwy 10 NA at night. Rwy 34 helicopter visibility reduction below 3/4 SM NA. For inop ALS, increase S-ILS 34 visibility all Cats to 7/8 SM and increase S-LOC 34 visibility all Cats to 1 SM.</p>			
AWOS-3PT	VALDOSTA APP CON *	UNICOM	
<b>118.525</b>	<b>126.6 285.6</b>	<b>122.7 (CTAF) 0</b>	



ELEV 355	TDZE 354
----------	----------



CATEGORY	A	B	C	D
S-ILS 34		623-3/4	269 (300-3/4)	
S-LOC 34		700-3/4	346 (400-3/4)	
CIRCLING	920-1 565 (600-1)	1060-1 705 (800-1)	1060-2 705 (800-2)	1240-3 885 (900-3)

SE-4, 26 DEC 2024 to 23 JAN 2025

SE-4, 26 DEC 2024 to 23 JAN 2025