

(DIRT.DIRT2) 17061

# DIRT TWO ARRIVAL (RNAV)

AL-5400 (FAA)

SPIRIT OF ST LOUIS (SUS)

ST. LOUIS, MISSOURI

## DIRT VERTICAL NAVIGATION PLANNING INFORMATION

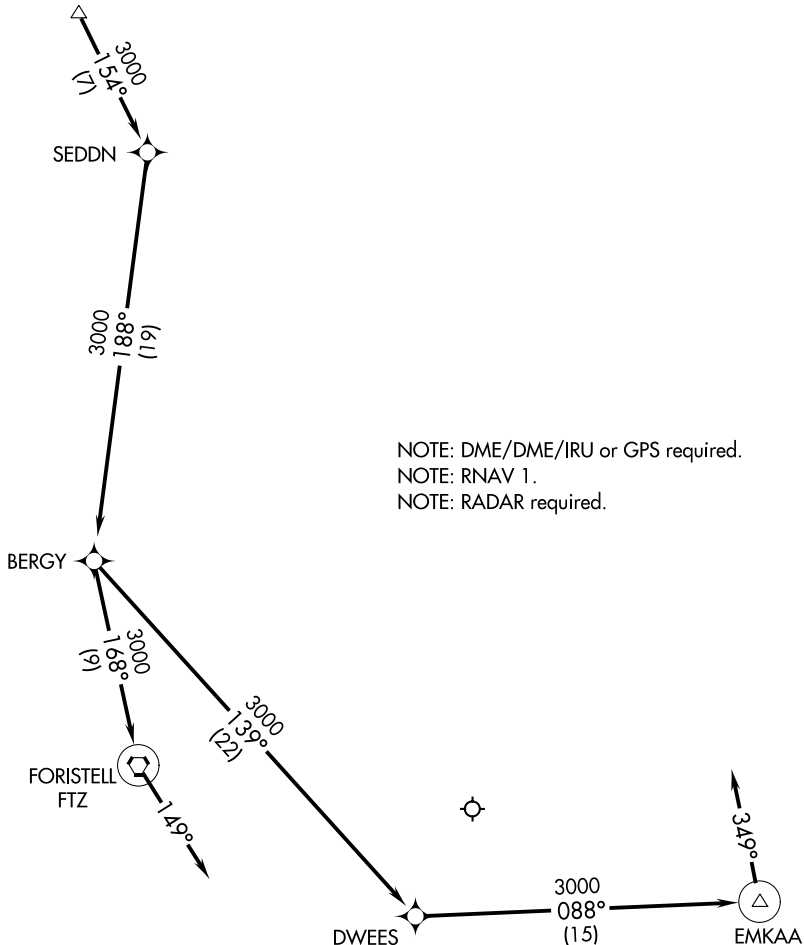
ST. LOUIS APP CON

119.15 335.5

ATIS

134.8

Expect 13000



NOTE: DME/DME/IRU or GPS required.

NOTE: RNAV 1.

NOTE: RADAR required.

NOTE: Chart not to scale.

### ARRIVAL ROUTE DESCRIPTION

From DIRT on track 154° to SEDDN, then on track 188° to BERGY.

LANDING RUNWAYS 8L/R: From BERGY on track 168° to FTZ VORTAC, then on track 149°. Expect RADAR vectors to final approach prior to FTZ VORTAC.

LANDING RUNWAYS 26L/R: From BERGY on track 139° to DWEES, then on track 088° to EMKAA, then on track 349°. Expect RADAR vectors to final approach prior to EMKAA.

# DIRT TWO ARRIVAL (RNAV)

(DIRT.DIRT2) 02MAR17

ST. LOUIS, MISSOURI  
SPIRIT OF ST LOUIS (SUS)

NC-3, 26 DEC 2024 to 23 JAN 2025

NC-3, 26 DEC 2024 to 23 JAN 2025