

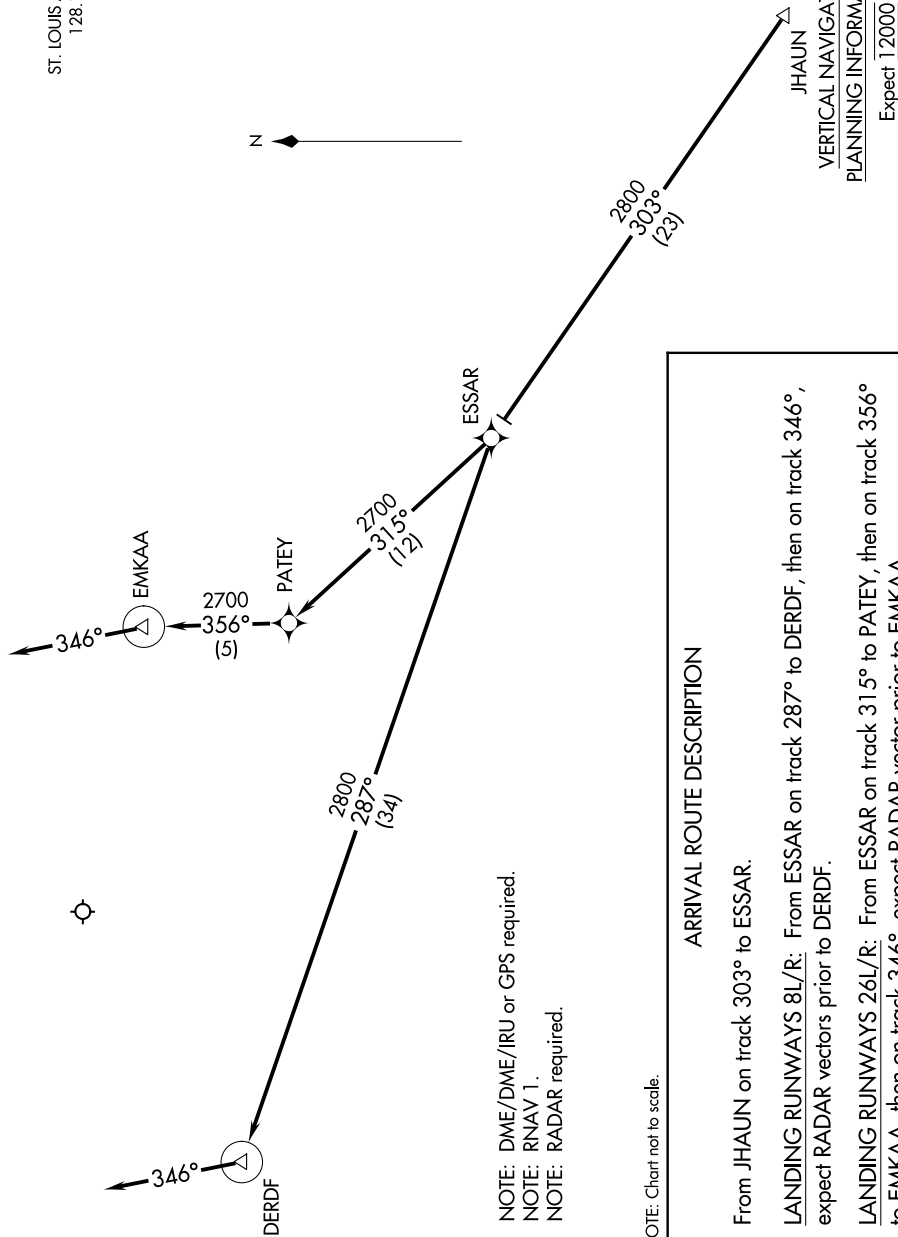
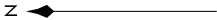
(JHAUN.JHAUN1) 16259

JHAUN ONE ARRIVAL (RNAV)

AL-5400 (FAA)

SPIRIT OF ST LOUIS (STUS)
ST. LOUIS, MISSOURI

ATIS
134.8
ST. LOUIS APP CON
128.1 307.05



JHAUN
VERTICAL NAVIGATION
PLANNING INFORMATION
Expect 12000

ARRIVAL ROUTE DESCRIPTION

From JHAUN on track 303° to ESSAR.

LANDING RUNWAYS 8L/R: From ESSAR on track 287° to DERDF, then on track 346°, expect RADAR vectors prior to DERDF.

LANDING RUNWAYS 26L/R: From ESSAR on track 315° to PATEY, then on track 356° to EMKAA, then on track 346°, expect RADAR vector prior to EMKAA.

NOTE: DME/DME/IRU or GPS required.
NOTE: RNAV 1.
NOTE: RADAR required.

NOTE: Chart not to scale.

NC-3, 26 DEC 2024 to 23 JAN 2025

NC-3, 26 DEC 2024 to 23 JAN 2025

JHAUN ONE ARRIVAL (RNAV)
(JHAUN.JHAUN1) 15NOV12

ST. LOUIS, MISSOURI
SPIRIT OF ST LOUIS (STUS)