

22083

AIRPORT DIAGRAM

AL-5401 (FAA)

MONTGOMERY-GIBBS EXEC (MYF)
SAN DIEGO, CALIFORNIA

ATIS
 126.9
 MONTGOMERY TOWER*
 119.2 269.4 (RWYS 05, 10L/R, 23, 28L)
 125.7 269.4 (RWY 28R)
 GND CON
 118.225
 CLNC DEL
 123.725

576

RWY 05-23
 PCN 37 F/B/Y/T
 S-12
 RWY 10L-28R
 PCN 48 F/C/Y/T
 S-12
 RWY 10R-28L
 PCN 44 F/C/Y/T
 S-12

JANUARY 2020
 ANNUAL RATE OF CHANGE
 0.1° W

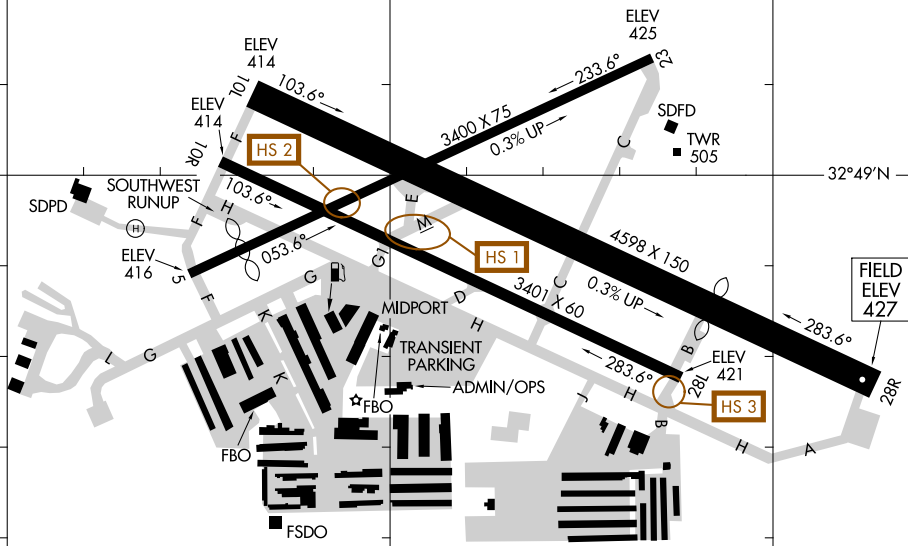
32°49.5'N

32°49'N

32°48.5'N

SW-3, 26 DEC 2024 to 23 JAN 2025

SW-3, 26 DEC 2024 to 23 JAN 2025



CAUTION: BE ALERT TO RUNWAY CROSSING CLEARANCES.
READBACK OF ALL RUNWAY HOLDING INSTRUCTIONS IS REQUIRED.

117°09'W

117°08.5'W

117°08'W

AIRPORT DIAGRAM
 22083

SAN DIEGO, CALIFORNIA
 MONTGOMERY-GIBBS EXEC (MYF)