

WAAS CH <b>69300</b> <b>W05A</b>	APP CRS <b>049°</b>	Rwy Idg <b>5000</b> TDZE <b>928</b> Apt Elev <b>928</b>
--	------------------------	---

# RNAV (GPS) RWY 5

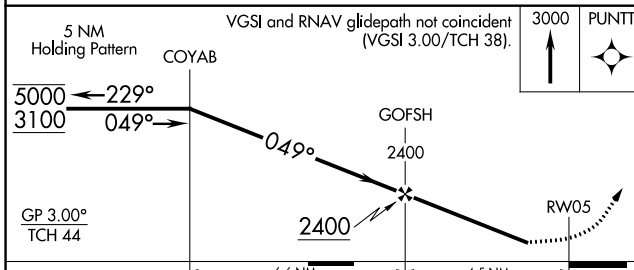
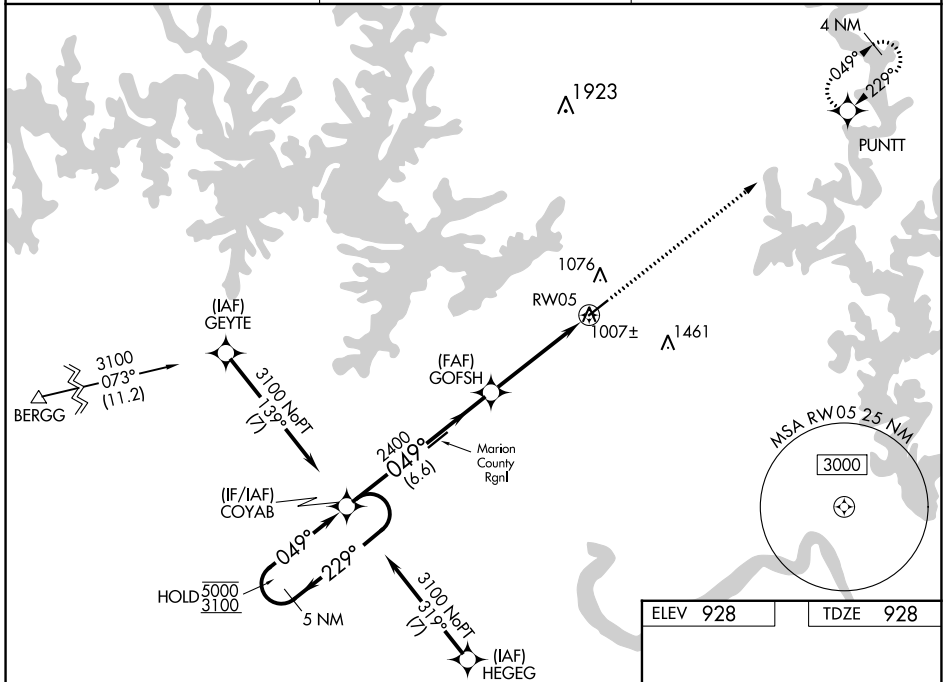
BAXTER COUNTY (BPK)

RNP APCH - GPS.

**⚠** For uncompensated Baro-VNAV systems, LNAV/VNAV NA below -13°C or above 54°C. Procedure NA at night. Circling NA for Cat C southeast of Rwy 5-23. Rwy 5 helicopter visibility reduction below 1 SM NA.

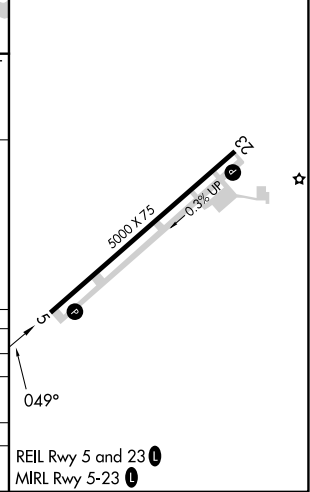
MISSED APPROACH: Climb to 3000 direct PUNTT and hold.

ASOS <b>133.975</b>	MEMPHIS CENTER <b>126.85 281.55</b>	UNICOM <b>123.0 (CTAF)</b>
------------------------	--	-------------------------------



ELEV 928	TDZE 928
----------	----------

CATEGORY	A	B	C	D
LPV DA	1201-1	273 (300-1)		NA
LNAV/VNAV DA	1250-1	322 (400-1)		NA
LNAV MDA	1280-1	352 (400-1)		NA
<b>C</b> CIRCLING	1400-1	472 (500-1)	1460-1½ 532 (600-1½)	NA



SC-1, 26 DEC 2024 to 23 JAN 2025

SC-1, 26 DEC 2024 to 23 JAN 2025