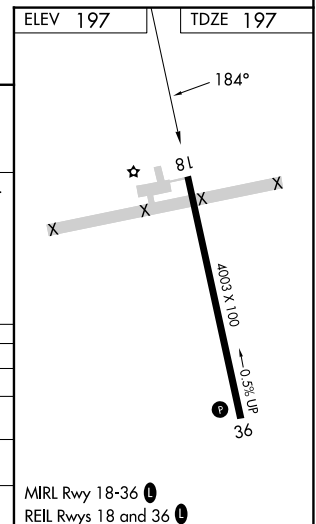
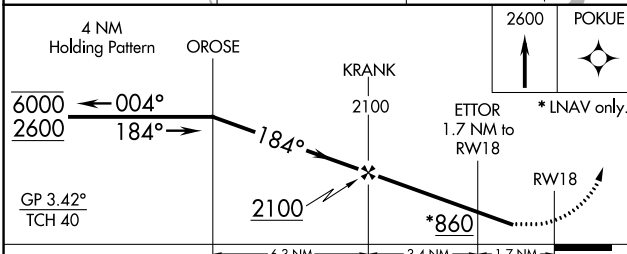
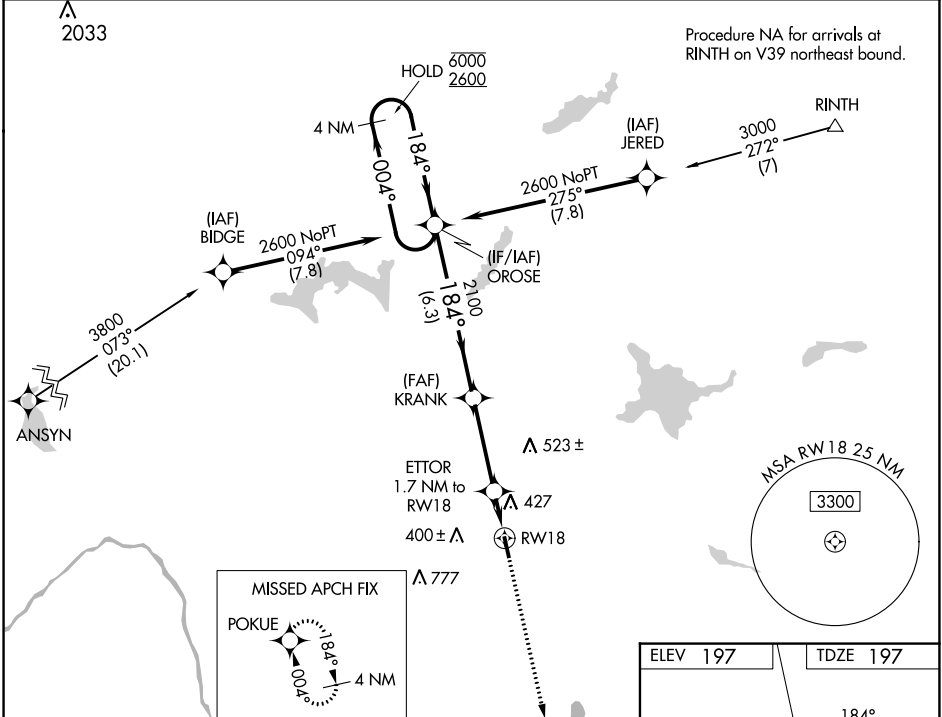


WAAS CH <b>53342</b> <b>W18A</b>	APP CRS <b>184°</b>	Rwy Idg TDZE Apt Elev	<b>4003</b> <b>197</b> <b>197</b>
--	------------------------	-----------------------------	---

# RNAV (GPS) RWY 18

PITTSFIELD MUNI (2B7)

RNP APCH.		MISSED APPROACH: Climb to 2600 direct POKUE and hold.
<b>V</b> Rwy 18 helicopter visibility reduction below 3/4 SM NA. Baro-VNAV NA. <b>A</b> NA Use Bangor altimeter setting; when not received procedure NA.		
BGR ASOS <b>127.75</b>	BANGOR APP CON <b>118.925 239.3</b>	UNICOM <b>122.8</b> (CTAF) <b>0</b>



CATEGORY	A	B	C	D
LPV DA	610-1 1/8	413 (500-1 1/8)		NA
LNAV/VNAV DA	785-1 3/4	588 (600-1 3/4)		NA
LNAV MDA	740-1	543 (600-1)	740-1 5/8 543 (600-1 5/8)	NA
<b>C</b> CIRCLING	800-1	603 (700-1)	880-2 683 (700-2)	NA

NE-1, 26 DEC 2024 to 23 JAN 2025

NE-1, 26 DEC 2024 to 23 JAN 2025