

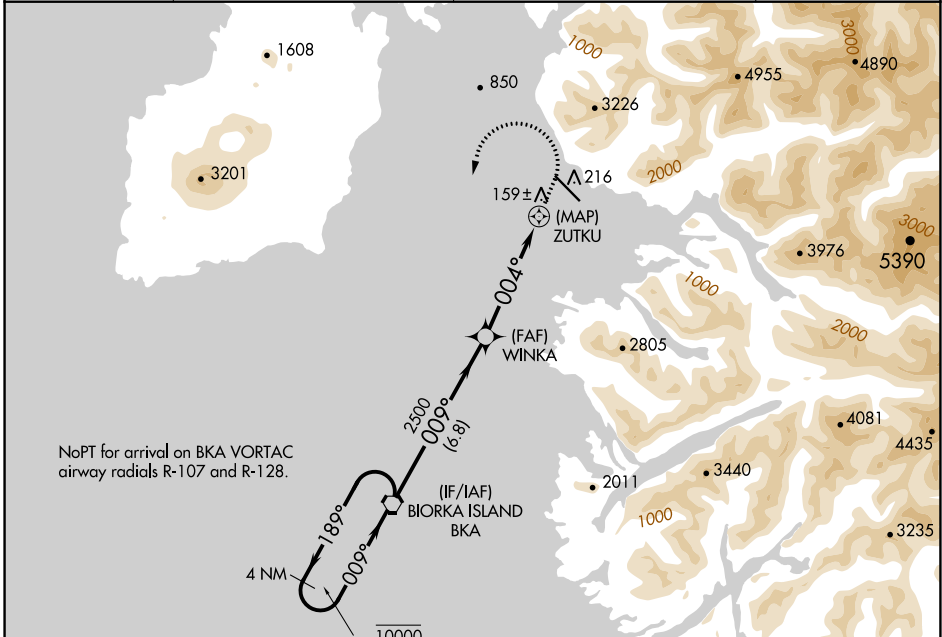
APP CRS <b>004°</b>	Rwy Idg TDZE Apt Elev	<b>N/A</b> <b>N/A</b> <b>27</b>
------------------------	-----------------------------	---------------------------------------

# RNAV (GPS)-B

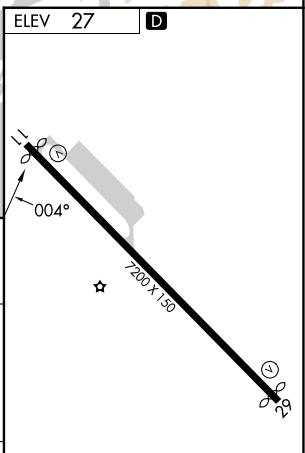
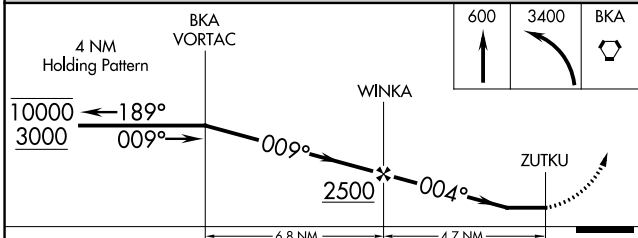
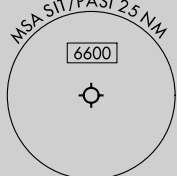
SITKA ROCKY GUTIERREZ (SIT)(PASI)

RNP APCH - GPS.	MISSED APPROACH: (Do not exceed 200K until BKA VORTAC) Climb to 600 then climbing left turn to 3400 direct BKA VORTAC and hold, continue climb-in-hold to 3400.
-----------------	--

AFIS <b>135.9</b>	ANCHORAGE CENTER <b>126.1 335.5</b>	SITKA RADIO <b>123.6 (CTAF) 122.2</b>	UNICOM <b>122.95</b>
----------------------	--	--	-------------------------



NoPT for arrival on BKA VORTAC airway radials R-107 and R-128.



CATEGORY	A	B	C	D
CIRCLING	520-1¾	493 (500-1¾)	1220-3 1193 (1200-3)	1620-3 1593 (1600-3)

REIL Rwys 11 and 29 **1**  
HIRL Rwy 11-29 **1**

AK, 26 DEC 2024 to 20 FEB 2025

AK, 26 DEC 2024 to 20 FEB 2025