

LOC/DME I-MAY <b>108.55</b> Chan <b>22 (Y)</b>	APP CRS <b>070°</b>	Rwy Idg TDZE Apt Elev	<b>5001</b> <b>1307</b> <b>1307</b>
--	------------------------	-----------------------------	---

# ILS or LOC RWY 7

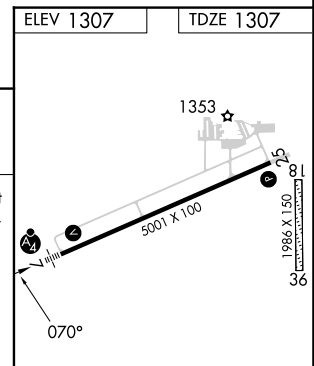
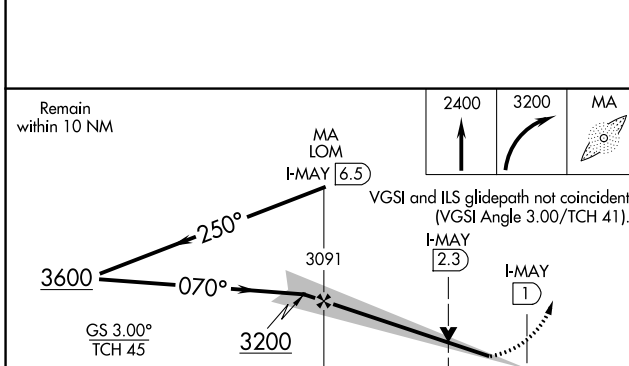
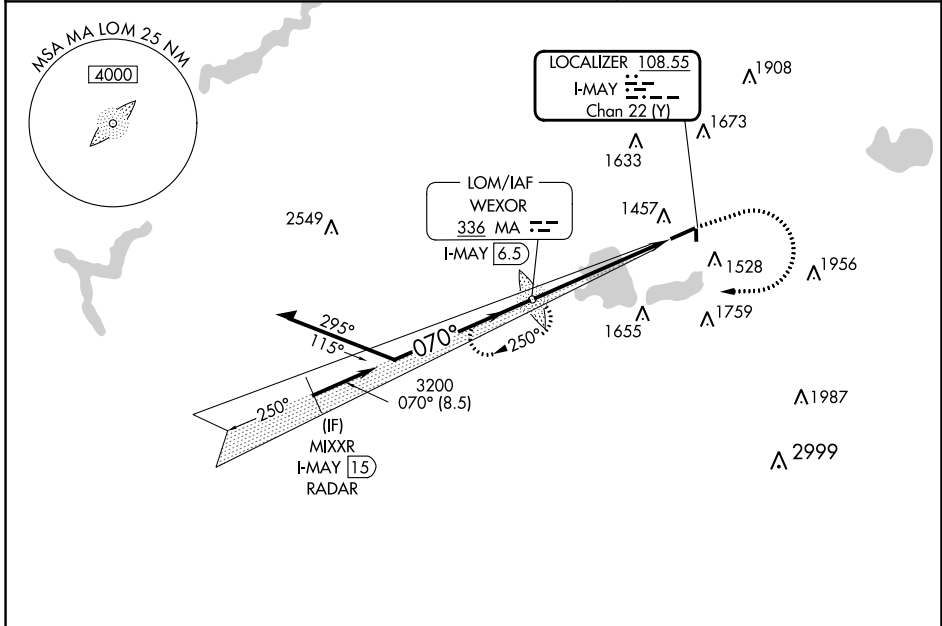
WEXFORD COUNTY (CAD)

ADF required. RADAR required for procedure entry.

**MALSFS** MISSED APPROACH: Climb to 2400 then climbing right turn to 3200 direct WEXOR. LOM/I-MAY 6.5 DME and hold.

**NA** Circling NA to Rwys 18 and 36. Inop table does not apply to S-ILS 7 all Cats.  
For inop ALS, increase S-LOC 7 Cat C/D visibility to 1 3/8 SM.

AWOS-3P <b>128.325</b>	MINNEAPOLIS CENTER <b>132.9 338.3</b>	UNICOM <b>122.8 (CTAF)</b>
---------------------------	--	-------------------------------



CATEGORY	A	B	C	D
S-ILS 7	1507-3/4		200 (200-3/4)	
S-LOC 7	1760-3/4 453 (500-3/4)		1760-1 453 (500-1)	
<b>CIRCLING</b>	1840-1 533 (600-1)		2040-2 733 (800-2) 2060-2 1/2 753 (800-2 1/2)	

ELEV 1307	TDZE 1307				
HIRL Rwy 7-25					
REIL Rwys 7 and 25					
FAF to MAP 5.5 NM					
Knots	60	90	120	150	180
Min:Sec	5:30	3:40	2:45	2:12	1:50

EC-1, 26 DEC 2024 to 23 JAN 2025

EC-1, 26 DEC 2024 to 23 JAN 2025