

(MAREO5.MAREO) 23334
MAREO FIVE DEPARTURE

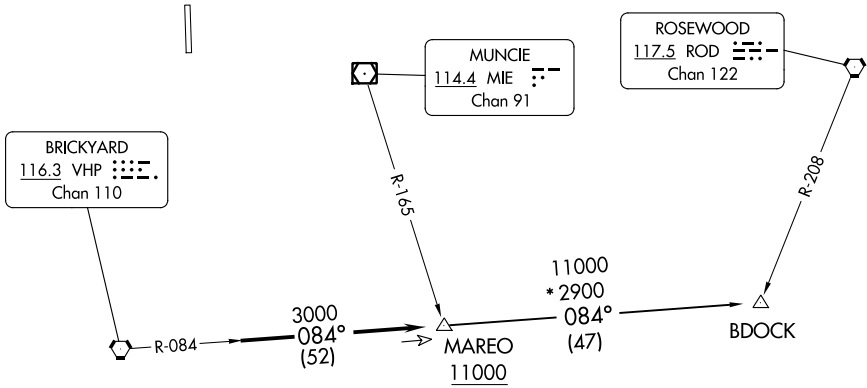
AL-5438 (FAA)

INDIANAPOLIS EXEC (TYQ)
 INDIANAPOLIS, INDIANA

AWOS-3PT
 120.725
 INDIANAPOLIS DEP CON
 124.65 127.15 317.8

**TOP ALTITUDE:
 ASSIGNED BY ATC**

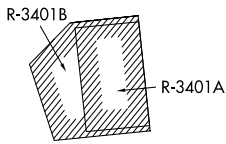
TAKEOFF MINIMUMS
 Rwy 18, 36: Standard.



EC-2, 26 DEC 2024 to 23 JAN 2025

EC-2, 26 DEC 2024 to 23 JAN 2025

- NOTE: RADAR required.
- NOTE: Select appropriate localizer/DME frequency/channel prior to departure.
- NOTE: Turbojets accelerate to 250K until reaching 10000, if unable advise ATC.
- NOTE: Assigned to aircraft with a requested altitude of 11000 or above.



NOTE: Chart not to scale.



DEPARTURE ROUTE DESCRIPTION

DEPARTING ALL OTHER AUTHORIZED RUNWAYS: Climb on assigned heading to assigned altitude. Thence....

....expect RADAR vectors to join VHP R-084 to MAREO INT then via transition or assigned route. Expect clearance to requested altitude ten minutes after departure.

BDOCK TRANSITION (MAREO5.BDOCK): From over MAREO INT via VHP R-084 to BDOCK INT.

MAREO FIVE DEPARTURE
 (MAREO5.MAREO) 01FEB18

INDIANAPOLIS, INDIANA
 INDIANAPOLIS EXEC (TYQ)