

WAAS CH 53599 W36A	APP CRS 002°	Rwy Idg 7000 TDZE 922 Apt Elev 922
--	------------------------	---

RNAV (GPS) RWY 36

INDIANAPOLIS EXEC (TYQ)

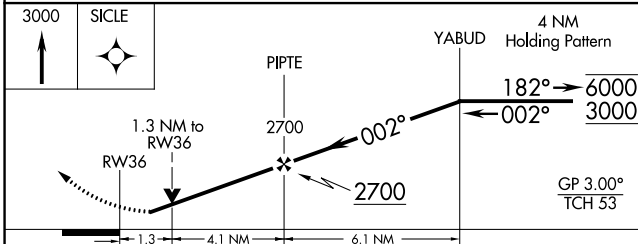
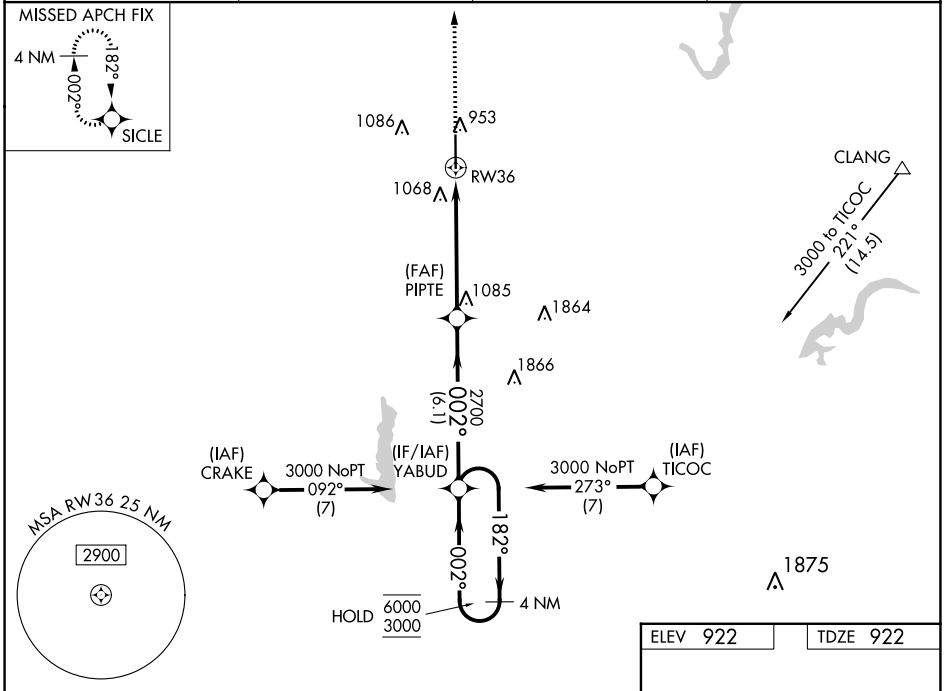
RNP APCH - GPS.

▽ Rwy 36 helicopter visibility reduction below 3/4 SM NA. For uncompensated Baro-VNAV systems, LNAV/VNAV NA below -16°C or above 54°C.

▲

MISSED APPROACH: Climb to 3000 direct SICLE and hold.

AWOS-3PT 120.725	INDIANAPOLIS APP CON 124.65 127.15 317.8	CLNC DEL 118.175	UNICOM 123.05 (CTAF)
----------------------------	--	----------------------------	--------------------------------



ELEV 922	TDZE 922
----------	----------

81
7000 X 100
36
002°

HIRL Rwy 18-36
REIL Rwy 18 and 36

CATEGORY	A	B	C	D
LPV DA		1199-7/8	277 (300-7/8)	
LNAV/VNAV DA		1351-1 1/4	429 (500-1 1/4)	
LNAV MDA	1400-1	478 (500-1)	1400-1 3/8	478 (500-1 3/8)
CIRCLING	1400-1	478 (500-1)	1440-1 1/2 518 (600-1 1/2)	1480-2 558 (600-2)

EC-2, 26 DEC 2024 to 23 JAN 2025

EC-2, 26 DEC 2024 to 23 JAN 2025