

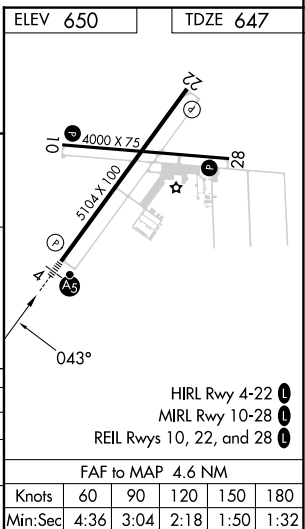
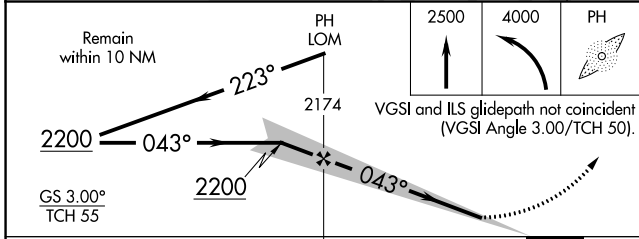
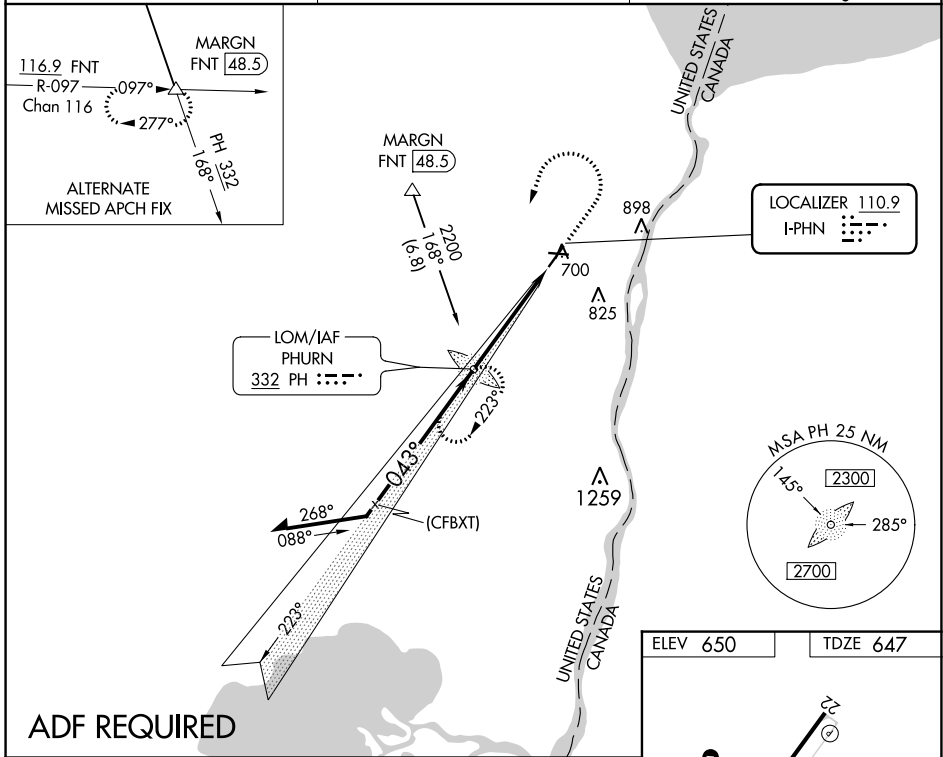
LOC I-PPHN <b>110.9</b>	APP CRS <b>043°</b>	Rwy Idg <b>5104</b>
		TDZE <b>647</b>
		Apt Elev <b>650</b>

# ILS or LOC RWY 4

ST CLAIR COUNTY INTL (PHN)

<p><b>▽</b> ADF required. When local altimeter setting not received, use Troy altimeter setting and increase all DA 95 feet and all MDA 100 feet; increase S-LOC 4 Cats C and D and Circling Cats C and D visibility ¼ mile. For inop MALSRL when using Troy altimeter setting, increase S-ILS 4 all Cats visibility to ¾ mile. Night landing: Rwy 10, 22, 28 NA.</p>	<p><b>MALSRL</b></p>	<p><b>MISSED APPROACH:</b> Climb to 2500 then climbing left turn to 4000 direct PHURN LOM and hold, continue climb-in-hold to 4000.</p>
---	----------------------	---

AWOS-3 <b>118.375</b>	SELRIDGE APP CON ★ <b>119.6 391.9</b>	UNICOM <b>123.05 (CTAF)</b>
--------------------------	--	--------------------------------



CATEGORY	A	B	C	D
S-ILS 4	847-½ 200 (200-½)			
S-LOC 4	1100-½ 453 (500-½)	1100-¾ 453 (500-¾)		
<b>C</b> CIRCLING	1160-1 510 (600-1)	1260-1¼ 610 (700-1¼)	1260-2 610 (700-2)	

EC-1, 26 DEC 2024 to 23 JAN 2025

EC-1, 26 DEC 2024 to 23 JAN 2025