

WAAS CH <b>87107</b> <b>W02A</b>	APP CRS <b>018°</b>	Rwy Idg TDZE Apt Elev	<b>4028</b> <b>933</b> <b>934</b>
--	------------------------	-----------------------------	---

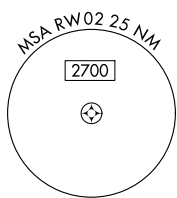
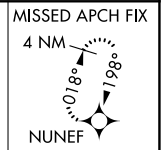
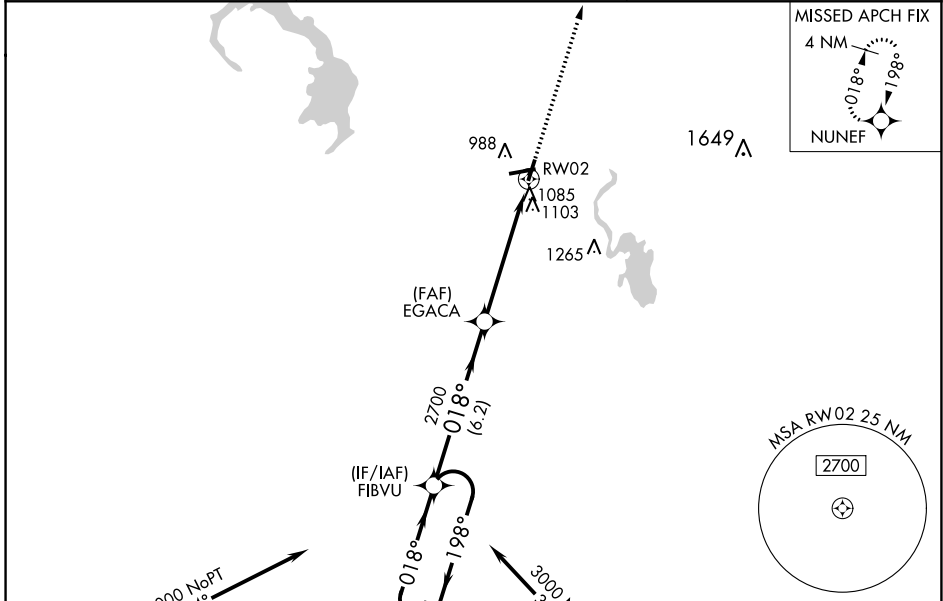
# RNAV (GPS) RWY 2

DODGE COUNTY (UNU)

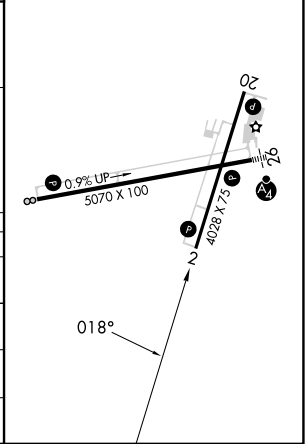
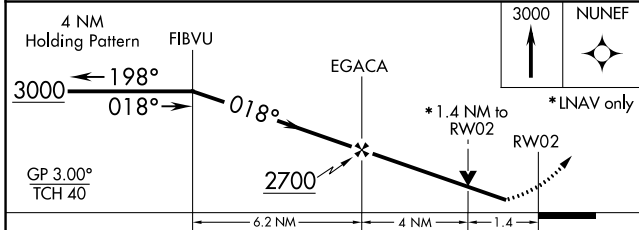
**⚠** For uncompensated Baro-VNAV systems, LNAV/VNAV NA below -16° C (4° F) or above 54° C (130° F). DME/DME RNP-0.3 NA. When local altimeter setting not received, use Dane County Rgnl-Truax Fld altimeter setting and increase all DA/MDA 100 feet, increase all visibilities ½ mile. VDP and Baro-VNAV NA when using Dane County Rgnl-Truax Fld altimeter setting. Visibility reduction by helicopters NA.

**MISSED APPROACH:**  
Climb to 3000 direct NUNEF and hold.

AWOS-3 <b>120.825</b>	MADISON APP CON * <b>119.15 343.7</b>	UNICOM <b>122.7 (CTAF)</b>
--------------------------	--	-------------------------------



ELEV 934	TDZE 933
REIL Rwy 2, 8, and 20	MIRL Rwy 8-26 and 2-20



CATEGORY	A	B	C	D
LPV DA	1189-1 256 (300-1)			NA
LNAV/VNAV DA	1432-1¾ 499 (500-1¾)			NA
LNAV MDA	1400-1 467 (500-1)		1400-1¼ 467 (500-1¼)	NA
<b>C</b> CIRCLING	1440-1 506 (600-1)		1440-1½ 506 (600-1½)	NA

EC-3, 26 DEC 2024 to 23 JAN 2025

EC-3, 26 DEC 2024 to 23 JAN 2025