

(ELD1.ELD) 24193

EL DORADO ONE DEPARTURE

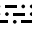
GEORGE BUSH INTCNL/HOUSTON (IAH)
AL-5461 (FAA) HOUSTON, TEXAS

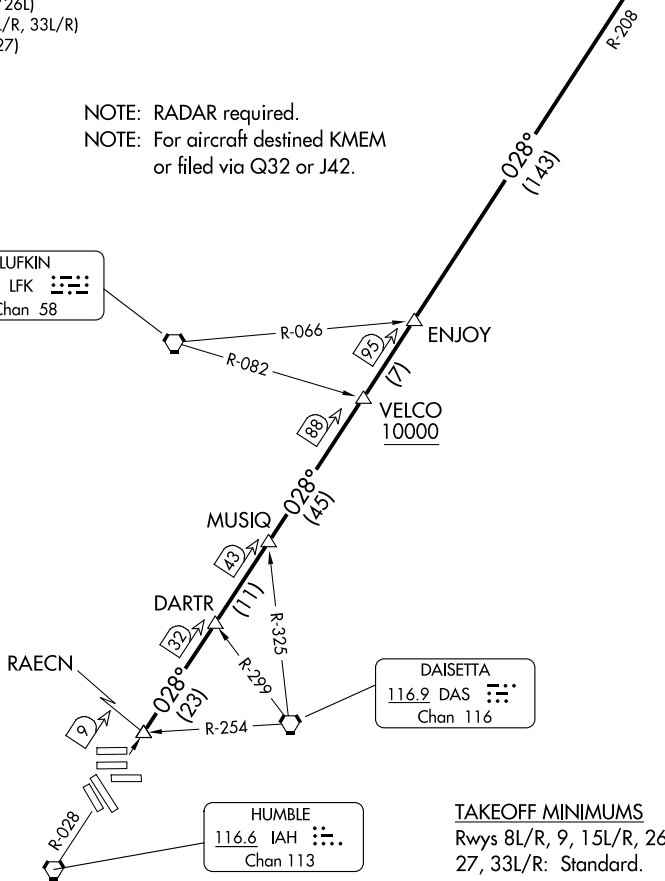
D-ATIS
124.05
CLNC DEL
128.1
CPDLC
GND CON
118.575 (Rwys 8L/R, 26L/R, 9/27)
121.7 (Rwys 15L/R, 33L/R)
HOUSTON TOWER
120.725 290.2 (Rwys 8L/26R)
125.35 290.2 (Rwys 8R/26L)
127.3 288.25 (Rwys 15L/R, 33L/R)
135.15 290.2 (Rwys 9/27)
HOUSTON DEP CON
132.25 285.425
HOUSTON DEP CON
132.25 285.425

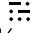
**TOP ALTITUDE:
16000**

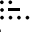
EL DORADO
115.5 ELD 
Chan 102

NOTE: RADAR required.
NOTE: For aircraft destined KMEM
or filed via Q32 or J42.

LUFKIN
112.1 LFK 
Chan 58



DAISSETTA
116.9 DAS 
Chan 116

HUMBLE
116.6 IAH 
Chan 113

TAKEOFF MINIMUMS
Rwys 8L/R, 9, 15L/R, 26L/R,
27, 33L/R: Standard.

NOTE: Chart not to scale.

DEPARTURE ROUTE DESCRIPTION

TAKEOFF ALL RUNWAYS: Climb on assigned heading for RADAR vectors to RAECN INT, maintain 16000. Expect filed altitude 10 minutes after departure, thence . . .

. . . on IAH R-028 and the ELD R-208 to ELD VOR/DME, cross VELCO INT at or above 10000.

EL DORADO ONE DEPARTURE

(ELD1.ELD) 07OCT21

HOUSTON, TEXAS
GEORGE BUSH INTCNL/HOUSTON (IAH)

SC-5, 26 DEC 2024 to 23 JAN 2025

SC-5, 26 DEC 2024 to 23 JAN 2025