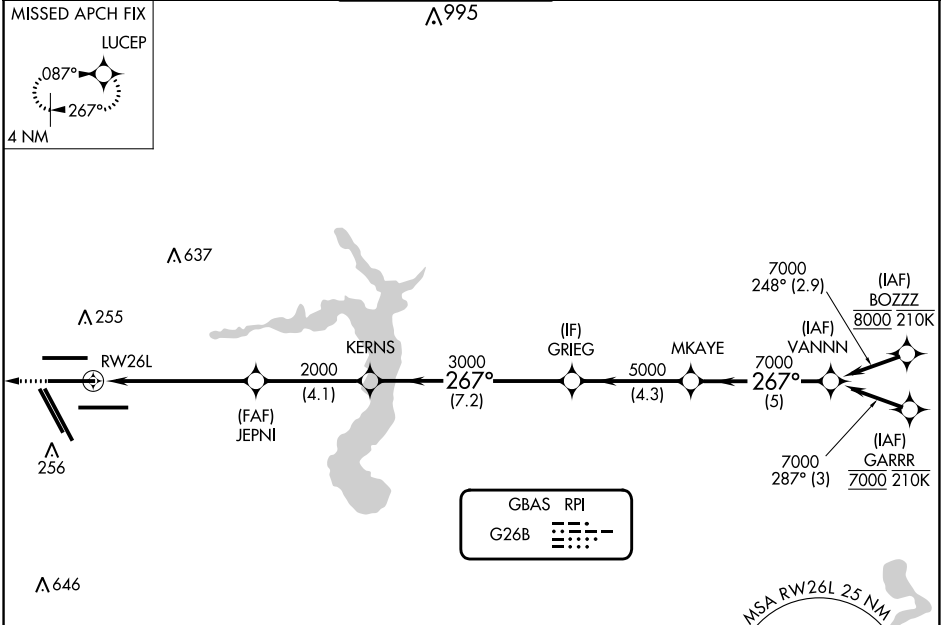


GBAS CH 20662 G26B	APP CRS 267°	Rwy Idg TDZE 95 Apt Elev 96	9402
--	------------------------	---	-------------

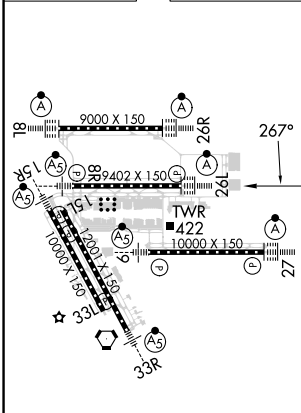
GLS RWY 26L

GEORGE BUSH INTCNL/HOUSTON (IAH)

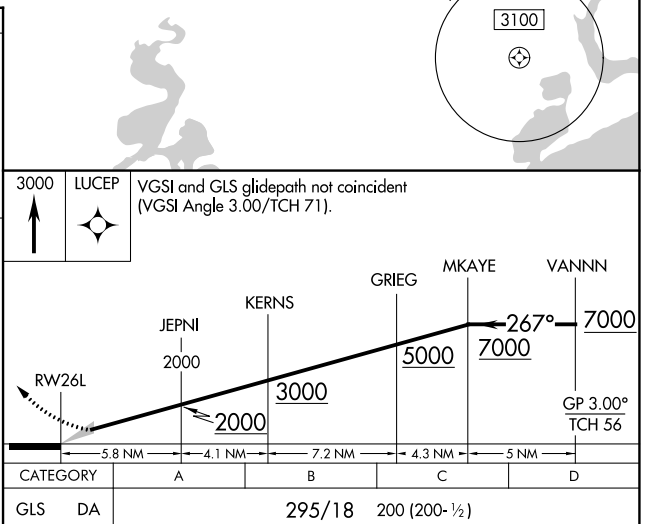
RNP APCH - GPS.		ALSIF-2		MISSED APPROACH: Climb to 3000 direct LUCEP and hold.	
<p>Simultaneous approach authorized. Use of FD or AP required during simultaneous operations. Autopilot coupled approach NA below 295.</p> <p>NA</p>					
D-ATIS 124.05	HOUSTON APP CON 120.05 379.1 EAST 124.35 316.15 WEST	HOUSTON TOWER 125.35 290.2	GND CON 118.575	CLNC DEL 128.1	CPDLC



ELEV 96	D	TDZE 95
---------	----------	---------



TDZ/CL Rwy 8R, 8L, 15R, 26R, 26L, 27 and 33L
HIRL all Rwy



SC-5, 26 DEC 2024 to 23 JAN 2025

SC-5, 26 DEC 2024 to 23 JAN 2025