

HOUSTON, TEXAS

AL-5461 (FAA)

24305

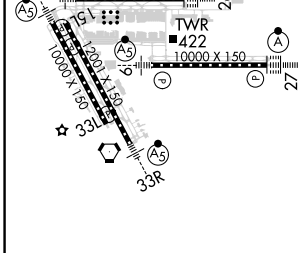
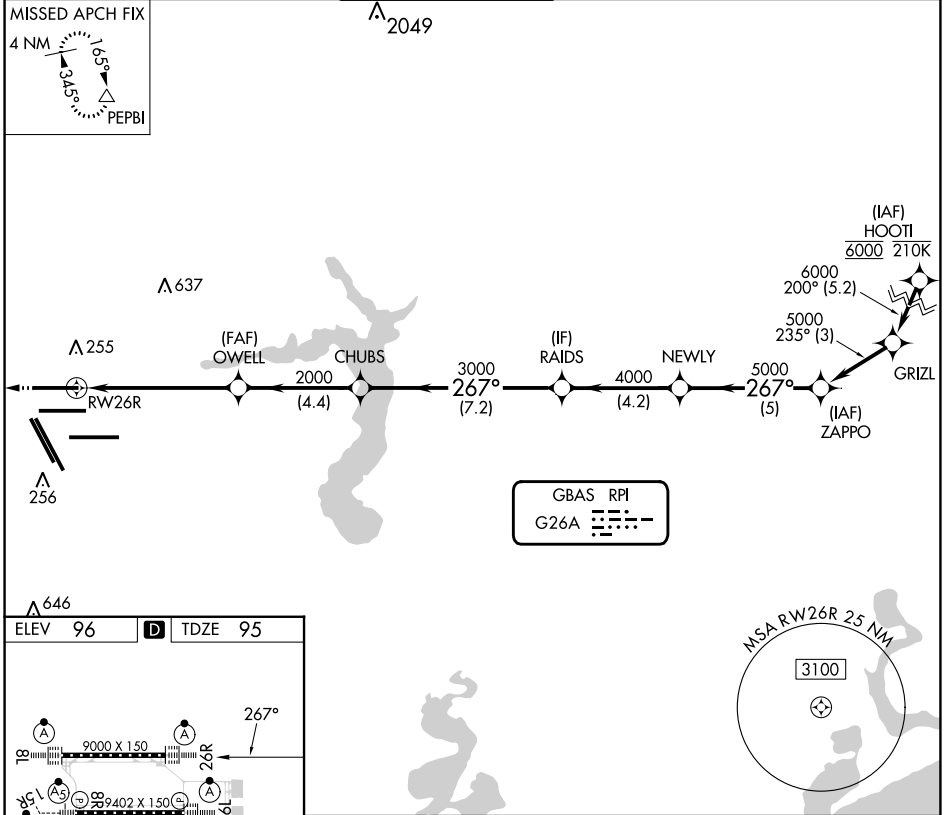
GBAS CH 21484 G26A	APP CRS 267°	Rwy Idg TDZE Apt Elev	9000 95 96
--	------------------------	-----------------------------	---------------------------------------

GLS RWY 26R

GEORGE BUSH INTCNL/HOUSTON (IAH)

RNP APCH - GPS.		ALSIF-2	MISSED APPROACH: Climb to 600 then climbing right turn to 3000 direct PEPBI and hold.		
Simultaneous approach authorized. Use of FD or AP required during simultaneous operations. Autopilot coupled approach NA below 295.					

D-ATIS 124.05	HOUSTON APP CON 120.05 379.1 EAST 124.35 316.15 WEST	HOUSTON TOWER 120.725 290.2	GND CON 118.575	CLNC DEL 128.1	CPDLC
-------------------------	--	---------------------------------------	---------------------------	--------------------------	-------



TDZ/CL Rwy's 8R, 8L, 15R, 26R, 26L, 27 and 33L

HIRL all Rwy's

600	3000	PEPBI				
RW26R	OWELL	CHUBS	RAIDS	NEWLY	ZAPPO	
	2000		4000	5000	5000	
	3000					GP 3.00°
	2000					TCH 59
	5.8 NM	4.4 NM	7.2 NM	4.2 NM	5 NM	
CATEGORY	A		B		D	
GLS	DA		295/18		200 (200-1/2)	

HOUSTON, TEXAS
Amdt 2A 20APR23

29°59'N-95°20'W

GEORGE BUSH INTCNL/HOUSTON (IAH)
GLS RWY 26R

SC-5, 26 DEC 2024 to 23 JAN 2025

SC-5, 26 DEC 2024 to 23 JAN 2025