

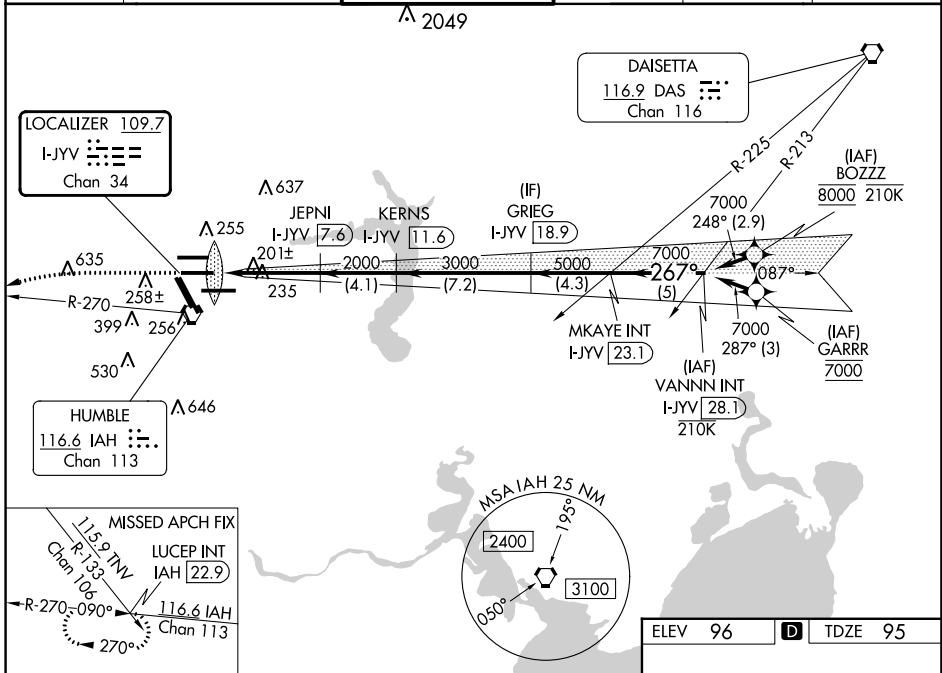
LOC/DME I-JYV 109.7 Chan 34	APP CRS 267°	Rwy Idg TDZE 95 Apt Elev 96	9402
-------------------------------------------------	------------------------	-------------------------------------------------	-------------

ILS RWY 26L (SA CAT I)

GEORGE BUSH INTCNL/HOUSTON (IAH)

DME required. From BOZZZ, GARRR: RNAV 1-GPS required.			ALSF-2 	MISSED APPROACH: Climb to 3000 then left turn heading 240° and IAH VORTAC R-270 to LUCEP INT/IAH 22.9 DME and hold.	
Simultaneous approach authorized with Rwy 26R and Rwy 27. Requires specific OPSPEC, MSPEC, or LOA approval and use of HUD to DH.					

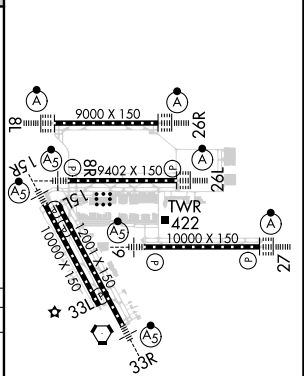
D-ATIS 124.05	HOUSTON APP CON 120.05 379.1 EAST 124.35 316.15 WEST	HOUSTON TOWER 125.35 290.2	GND CON 118.575	CLNC DEL 128.1	CPDLC
-------------------------	--------------------------------------------------------------------------	--------------------------------------	---------------------------	--------------------------	-------



SC-5, 26 DEC 2024 to 23 JAN 2025

SC-5, 26 DEC 2024 to 23 JAN 2025

ELEV 96	D	TDZE 95		
3000	hdg 240°	IAH R-270	LUCEP INT	VGSI and ILS glidepath not coincident (VGSI Angle 3.00/TCH 71).
CATEGORY	A	B	C	D
S-ILS 26L	RA 152/14 150 DA 245			



SA CATEGORY I ILS - SPECIAL AIRCREW & AIRCRAFT CERTIFICATION REQUIRED

TDZ/CL Rwsys 8R, 8L, 15R, 26R, 26L, 27 and 33L
HIRL all Rwsys