

LOC/DME I-BZU 111.55 Chan 52 (Y)	APP CRS 087°	Rwy Idg TDZE Apt Elev	9000 94 96
---	------------------------	-----------------------------	---------------------------------------

ILS RWY 8L (SA CAT I)

GEORGE BUSH INTCNL/HOUSTON (IAH)

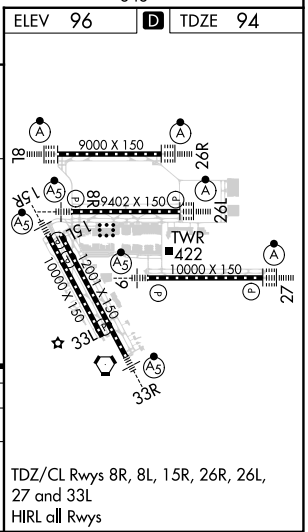
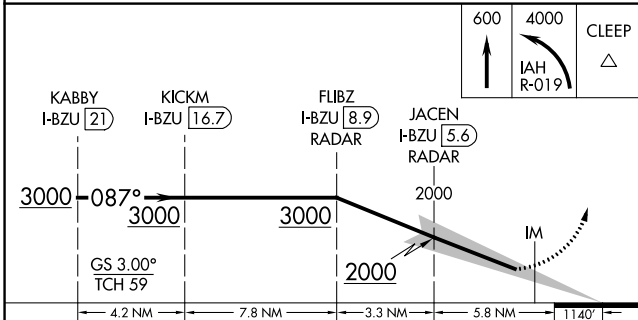
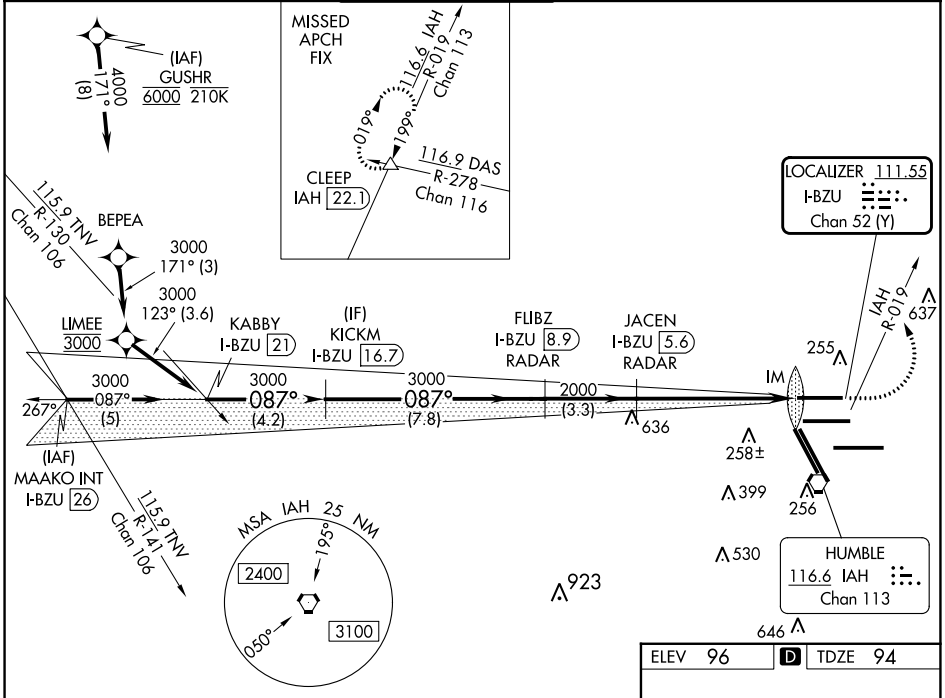
DME required. From GUSHR: RNAV 1-GPS required.

Simultaneous approach authorized with Rwy 8R and Rwy 9. Requires specific OPSPEC, MSPEC, or LOA approval and use of HUD to DH.

ALSF-2

MISSED APPROACH: Climb to 600 then climbing left turn to 4000 on IAH VORTAC R-019 to CLEEP INT/IAH 22.1 DME and hold.

ATIS 124.05	HOUSTON APP CON 120.05 379.1 EAST 124.35 316.15 WEST	HOUSTON TOWER 120.725 290.2	GND CON 118.575	CLNC DEL 128.1	CPDLC
-----------------------	--	---------------------------------------	---------------------------	--------------------------	-------



CATEGORY	A	B	C	D
S-ILS 8L		RA 158/14	150 DA 244	

SA CATEGORY I ILS - SPECIAL AIRCREW & AIRCRAFT CERTIFICATION REQUIRED

TDZ/CL Rwy's 8R, 8L, 15R, 26R, 26L, 27 and 33L
HIRL all Rwy's

SC-5, 26 DEC 2024 to 23 JAN 2025

SC-5, 26 DEC 2024 to 23 JAN 2025