

HOUSTON, TEXAS

AL-5461 (FAA)

24305

WAAS CH 57902 W33A	APP CRS 329°	Rwy 33R Rwy ldg 12001 TDZE 89 Apt Elev 96	Rwy 33L Rwy ldg 10000 TDZE 90 Apt Elev 96
--	------------------------	---	---

RNAV (GPS) RWY 33R

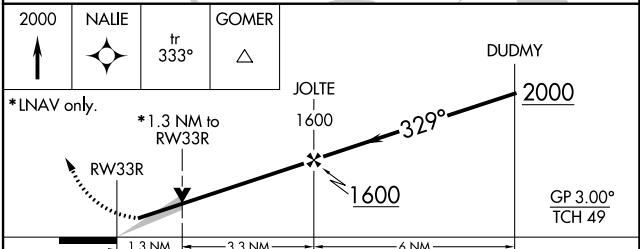
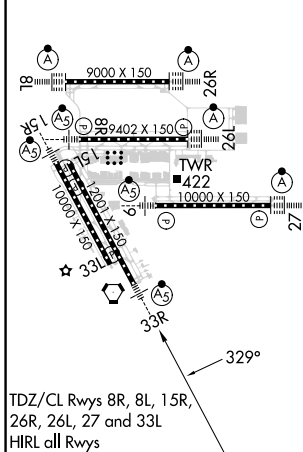
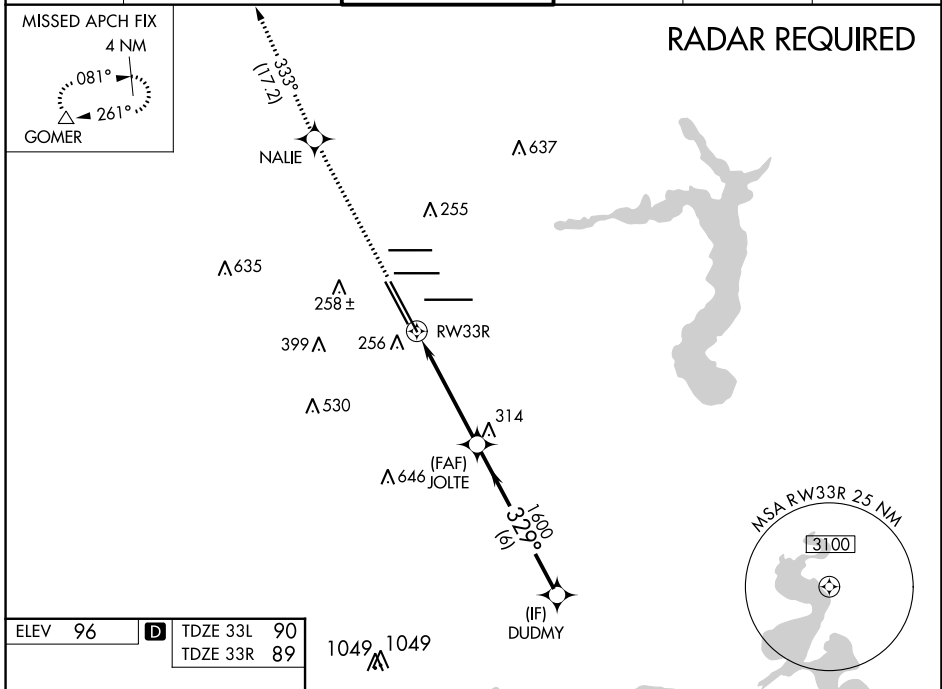
GEORGE BUSH INTCNL/HOUSTON (IAH)

▼ For uncompensated Baro-VNAV systems, LNAV/VNAV NA below -3°C (27°F) or above 54°C (130°F). For inop MALS, increase LPV Cat E visibility to RVR 4000, LNAV/VNAV Cat E visibility to 1½, and LNAV Cat E visibility to 1½. DME/DME RNP-0.3 NA. **RVR 1800 authorized with use of FD or AP or HUD to DA.



MISSED APPROACH: Climb to 2000 direct NALIE and on track 333° to GOMER and hold.

D-ATIS 124.05	HOUSTON APP CON 120.05 379.1 EAST 124.35 316.15 WEST	HOUSTON TOWER 127.3 288.25	GND CON 121.7	CLNC DEL 128.1	CPDLC
-------------------------	--	--------------------------------------	-------------------------	--------------------------	-------



CATEGORY	A	B	C	D	E
LPV DA**	289/24		200 (200-½)		
LNAV/VNAV DA	490/45		401 (400-¾)		
LNAV MDA	540/24	451 (500-½)	540/45		451 (500-¾)
SIDESTEP 33L	540-1	450 (500-1)	540-1½ 450 (500-1½)	540-2 450 (500-2)	NA

HOUSTON, TEXAS
Amdt 2B 07DEC17

29°59'N-95°20'W

RNAV (GPS) RWY 33R

SC-5, 26 DEC 2024 to 23 JAN 2025

SC-5, 26 DEC 2024 to 23 JAN 2025