

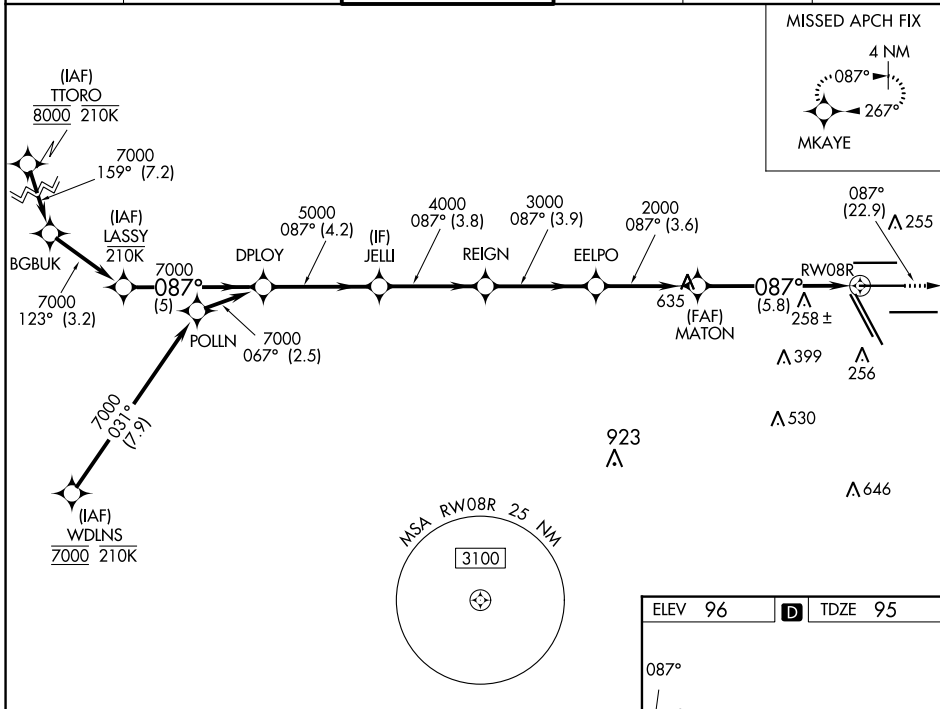
APP CRS	Rwy Idg	9402
087°	TDZE	95
	Apt Elev	96

RNAV (RNP) Y RWY 8R

GEORGE BUSH INTCNL/HOUSTON (IAH)

RNP AR APCH.		MALSR	MISSED APPROACH: Climb to 3000 on track 087° to MKAYE and hold.
<p>For uncompensated Baro-VNAV systems, procedure NA below -3°C or above 54°C. For inop ALS increase RNP 0.13 all Cats visibility to RVR 4500, RNP 0.14 all Cats visibility to RVR 5600, RNP 0.30 all Cats visibility to 1¼ SM. Simultaneous approach authorized.</p>			

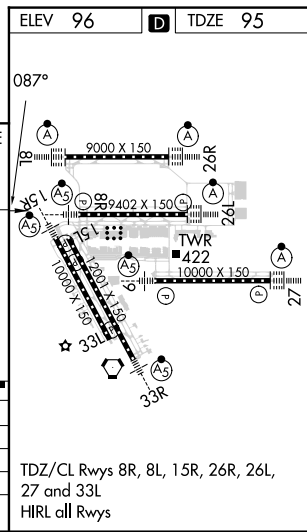
D-ATIS	HOUSTON APP CON	HOUSTON TOWER	GND CON	CLNC DEL	CPDLC
124.05	120.05 379.1 EAST 124.35 316.15 WEST	125.35 290.2	118.575	128.1	



SC-5, 26 DEC 2024 to 23 JAN 2025

SC-5, 26 DEC 2024 to 23 JAN 2025

VGSi and RNAV glidepath not coincident (VGSi Angle 3.00/TCH 72).		3000	tr	087°	MKAYE	
LASSY	DPLOY	JELLI	REIGN	EELPO	MATON	RWY 8R
7000	7000	5000	4000	3000	2000	
GP 3.00°						
TCH 55						
	-5 NM	4.2 NM	3.8	3.9	3.6	5.8 NM
CATEGORY	A	B	C	D		
RNP 0.13 DA		383/40	288 (300-¾)			
RNP 0.14 DA		441/40	346 (400-¾)			
RNP 0.30 DA		492/45	397 (400-¾)			



AUTHORIZATION REQUIRED

TDZ/CL Rwy 8R, 8L, 15R, 26R, 26L, 27 and 33L
HIRL all Rwy's