


APP CRS	Rwy Idg	<b>10000</b>
<b>087°</b>	TDZE	<b>91</b>
	Apt Elev	<b>96</b>

# RNAV (RNP) Y RWY 9

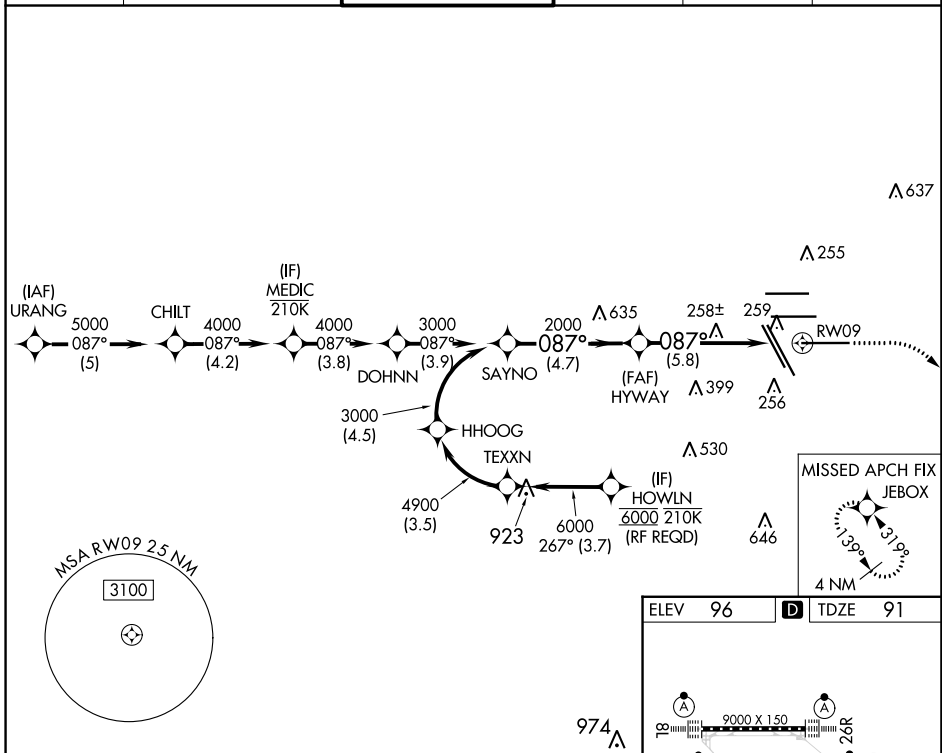
GEORGE BUSH INTCNL/HOUSTON (IAH)

**▽** For uncompensated Baro-VNAV systems, procedure NA below -3°C (27°F) or above 54°C (130°F). GPS required. For inop MALS, increase all Cats visibility to 1 $\frac{3}{8}$  mile. Simultaneous approach authorized. Use of FD or AP providing RNAV track guidance required during simultaneous operations.

MALS 

MISSED APPROACH: Climb to 580 then climbing right turn to 3000 direct JEBOX and hold.

D-ATIS	HOUSTON APP CON	HOUSTON TOWER	GND CON	CLNC DEL	CPDLC
<b>124.05</b>	<b>120.05 379.1 EAST</b> <b>124.35 316.15 WEST</b>	<b>135.15 290.2</b>	<b>118.575</b>	<b>128.1</b>	



SC-5, 26 DEC 2024 to 23 JAN 2025

SC-5, 26 DEC 2024 to 23 JAN 2025

VGS1 and RNAV glidepath not coincident (VGS1 Angle 3.00/TCH 71).		580	3000	JEBOX
CATEGORY	A	B	C	D
RNP 0.30 DA	51.6/49 425 (500-1)			

ELEV 96 **D** TDZE 91

TWZ/CL Rwwys 8R, 8L, 15R, 26R, 26L, 27 and 33L  
HIRL all Rwwys

## AUTHORIZATION REQUIRED