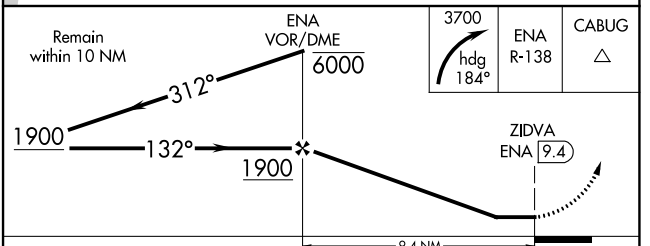
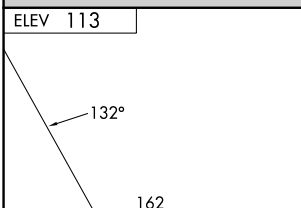
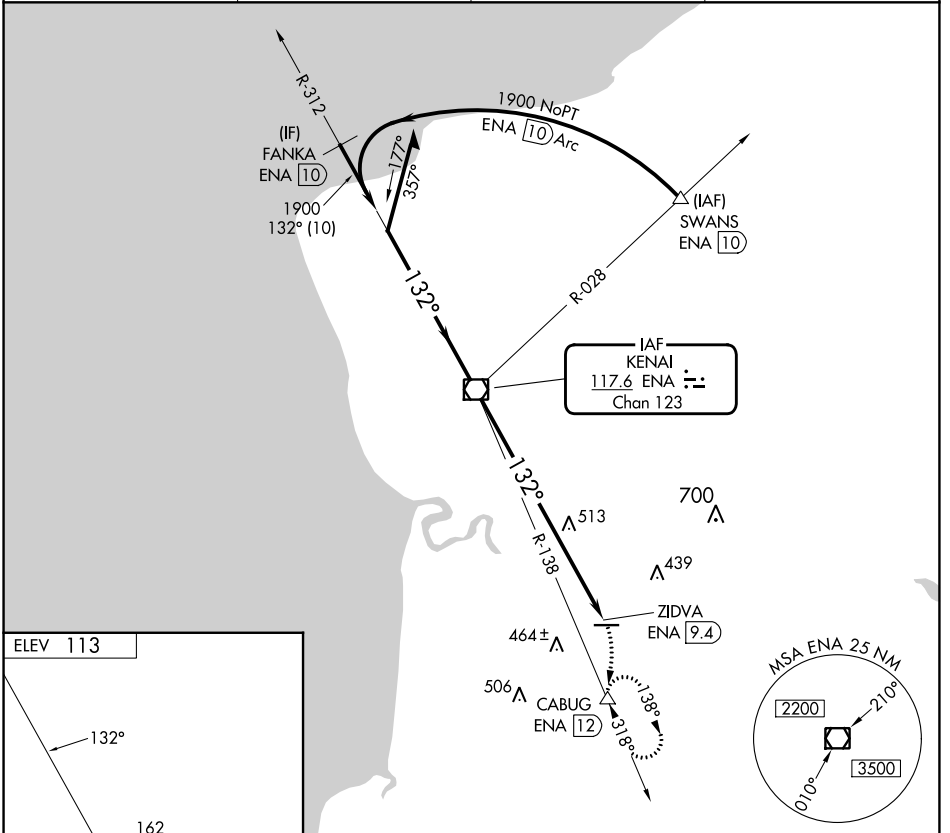


VOR/DME ENA <b>117.6</b> Chan <b>123</b>	APP CRS <b>132°</b>	Rwy Idg TDZE Apt Elev <b>N/A</b> <b>N/A</b> <b>113</b>
--	------------------------	--

**VOR-A**  
SOLDOTNA (SXQ)(PASX)

DME required.	MISSED APPROACH: Climbing right turn to 3700 on heading 184° and on ENA R-138 to CABUG/ENA 12 DME and hold, continue climb-in-hold to 3700.
---------------	---

AWOS-3P <b>135.45</b>	ANCHORAGE CENTER <b>125.7 379.1</b>	KENAI RADIO <b>122.35</b>	CTAF <b>122.50</b>
--------------------------	--	------------------------------	-----------------------



CATEGORY	A	B	C	D
<b>C</b> CIRCLING	1020-1¼	907 (1000-1¼)	1020-2¾ 907 (1000-2¾)	1020-3 907 (1000-3)

AK, 26 DEC 2024 to 20 FEB 2025

AK, 26 DEC 2024 to 20 FEB 2025