

WAAS CH 50134 W28A	APP CRS 281°	Rwy Idg TDZE Apt Elev	5000 1184 1184
--	------------------------	-----------------------------	---

RNAV (GPS) RWY 28

HILLSDALE MUNI (JYM)

RNP APCH.

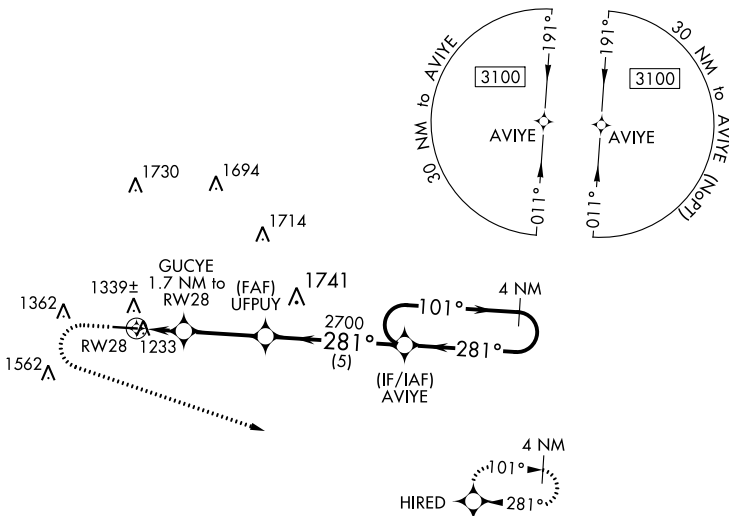
⚠ Rwy 28 helicopter visibility reduction below 3/4 SM NA.
For uncompensated Baro-VNAV systems, LNAV/VNAV NA below -17°C or above 54°C.

MISSED APPROACH: Climb to 1700 then climbing left turn to 3100 direct HIRED and hold.

AWOS-3
121.025

TOLEDO APP CON
134.35 317.55

UNICOM
122.8 (CTAF) 0

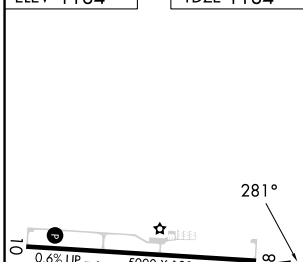


EC-1, 26 DEC 2024 to 23 JAN 2025

EC-1, 26 DEC 2024 to 23 JAN 2025

ELEV 1184 TDZE 1184

	1700	3100	HIRED				
	↑	↷	⬠				
*LNAV only				UFPUY	AVIYE	4 NM Holding Pattern	
		GUCYE 1.7 NM to RW28		2700			
		* 1.1 NM to RW28					
		RW28					
							GP 3.00° TCH 40
CATEGORY	A		B		C		D
LPV DA	1474-1		290 (300-1)				NA
LNAV/VNAV DA	1489-1		305 (400-1)				NA
LNAV MDA	1580-1		396 (400-1)		1580-1 1/8 396 (400-1 1/8)		NA
C CIRCLING	1640-1 456 (500-1)		1680-1 496 (500-1)		1680-1 1/2 496 (500-1 1/2)		NA



REIL Rwy 10 and 28 **0**
HIRL Rwy 10-28 **0**

RNAV (GPS) RWY 28

HILLSDALE MUNI (JYM)