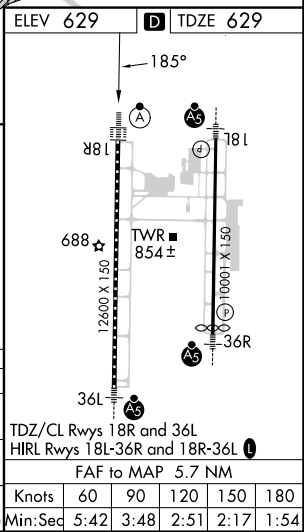
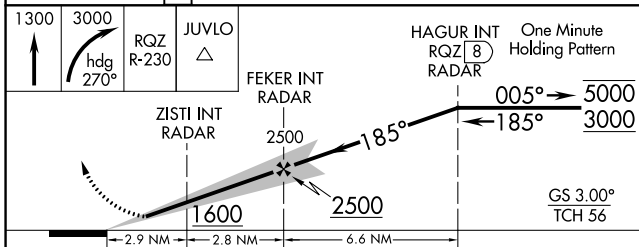
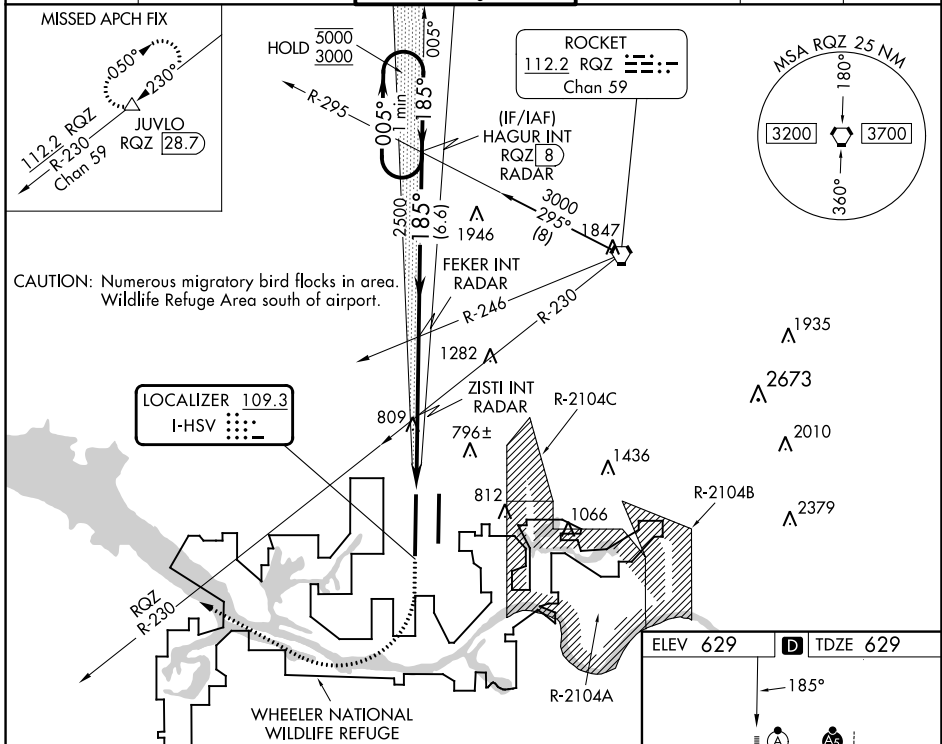


LOC I-HSV 109.3	APP CRS 185°	Rwy Idg 12600 TDZE 629 Apt Elev 629
---------------------------	------------------------	--

ILS or LOC RWY 18R

HUNTSVILLE INTL-CARL T JONES FLD (HSV)

DME required. RADAR required for procedure entry.		ALSF-2 	MISSED APPROACH: Climb to 1300 then climbing right turn to 3000 on heading 270° and RQZ R-230 to JUVLO/RQZ 28.7 DME and hold.				
 Circling NA for Cats C/D/E east of Rwy 18L-36R. Simultaneous approach authorized. For inop ALS, increase S-ILS 18R Cat E visibility to RVR 4000 and S-LOC 18R Cat E visibility to 1/4 SM. DME from RQZ VORTAC. DME use requires simultaneous reception of I-HSV and RQZ DME.		ATIS 121.25	HUNTSVILLE APP CON * 125.6 354.1	HUNTSVILLE TOWER * 127.6 (CTAF) 0 350.35	GND CON 121.9 269.525	CLNC DEL 120.35	UNICOM 122.95



CATEGORY	A	B	C	D	E
S-ILS 18R	829/18 200 (200-1/2)				
S-LOC 18R	1060/24	431 (500-1/2)	1060/40	431 (500-3/4)	
CIRCLING	1160-1	531 (600-1)	1160-1 1/2 531 (600-1 1/2)	1240-2 611 (700-2)	1260-2 1/4 631 (700-2 1/4)

TDZ/CL Rws 18R and 36L		HIRL Rws 18L-36R and 18R-36L		FAF to MAP 5.7 NM	
Knots	60	90	120	150	180
Min:Sec	5:42	3:48	2:51	2:17	1:54

SE-4, 26 DEC 2024 to 23 JAN 2025

SE-4, 26 DEC 2024 to 23 JAN 2025