

LOC/DME I-JJC <b>109.55</b> Chan 32 (Y)	APP CRS <b>005°</b>	Rwy Idg <b>9801</b> TDZE <b>595</b> Apt Elev <b>629</b>
---	------------------------	---

# ILS or LOC RWY 36R

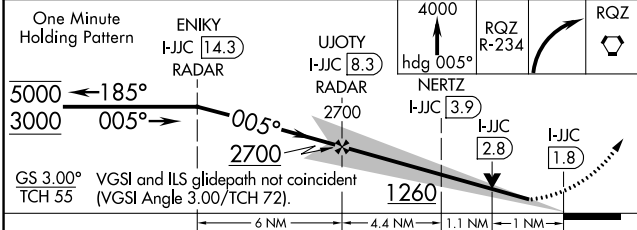
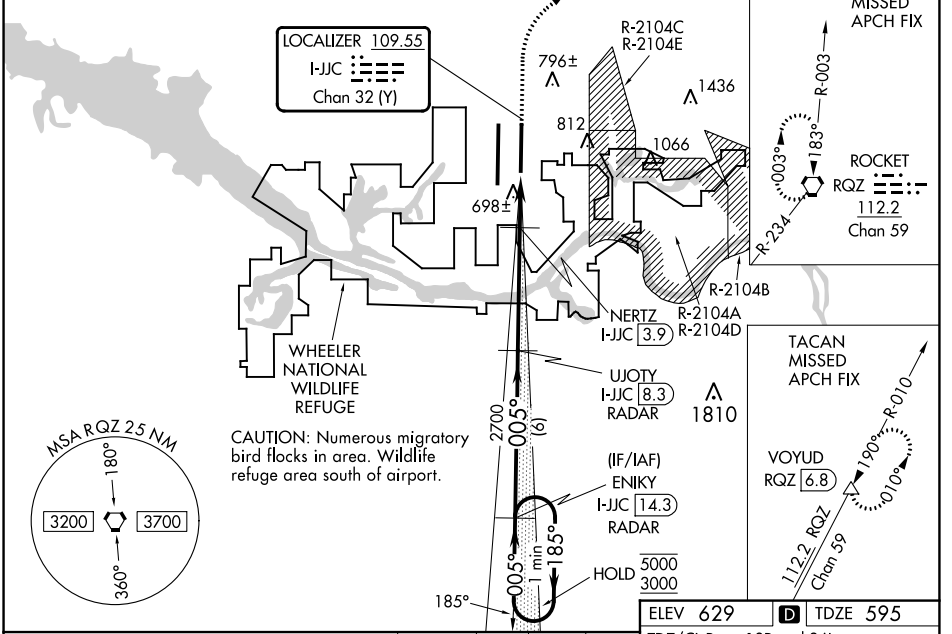
## HUNTSVILLE INTL-CARL T JONES FLD (HSV)

RADAR required for procedure entry. DME or RADAR required.

**ASR** Simultaneous approach authorized. For inop ALS, increase S-ILS 36R Cat E visibility to RVR 4000 and S-LOC 36R Cat C/D/E visibility to 1½ SM; NERTZ Fix minimums: increase S-LOC 36R Cat E visibility to RVR 6000. Circling NA for Cat C/D/E east of Rwy 18L-36R.

**MALSR** MISSED APPROACH: Climb to 4000 on heading 005° to intercept RQZ R-234 and right turn to RQZ VORTAC and hold, continue climb-in-hold to 4000. (TACAN aircraft continue climb to 5000 on RQZ VORTAC R-010 to VOYUD/RQZ 6.8 DME and hold north, left turn, 190° inbound, continue climb-in-hold to 5000).

ATIS <b>121.25</b>	HUNTSVILLE APP CON ★ <b>125.6 354.1</b>	HUNTSVILLE TOWER ★ <b>127.6 (CTAF) 350.35</b>	GND CON <b>121.9 269.525</b>	CLNC DEL <b>120.35</b>	UNICOM <b>122.95</b>
-----------------------	--	--	---------------------------------	---------------------------	-------------------------



ELEV 629	TDZE 595
TDZ/CL Rwys 18R and 36L HIRL Rwys 18L-36R and 18R-36L	
FAF to MAP 6.5 NM	
Knots	60 90 120 150 180
Min:Sec	6:30 4:20 3:15 2:36 2:10

CATEGORY	A	B	C	D	E
S-ILS 36R	818/24 223 (200-½)				
S-LOC 36R	1260/24	665 (700-½)	1260-1½		665 (700-1½)
<b>C</b> CIRCLING	1260-1	631 (700-1)	1260-1⅞	1260-2	1260-2¼
NERTZ FIX MINIMUMS					
S-LOC 36R	980/24	385 (400-½)	980/35	385 (400-⅝)	
<b>C</b> CIRCLING	1160-1	531 (600-1)	1160-1½	1240-2	1260-2¼

SE-4, 26 DEC 2024 to 23 JAN 2025

SE-4, 26 DEC 2024 to 23 JAN 2025