

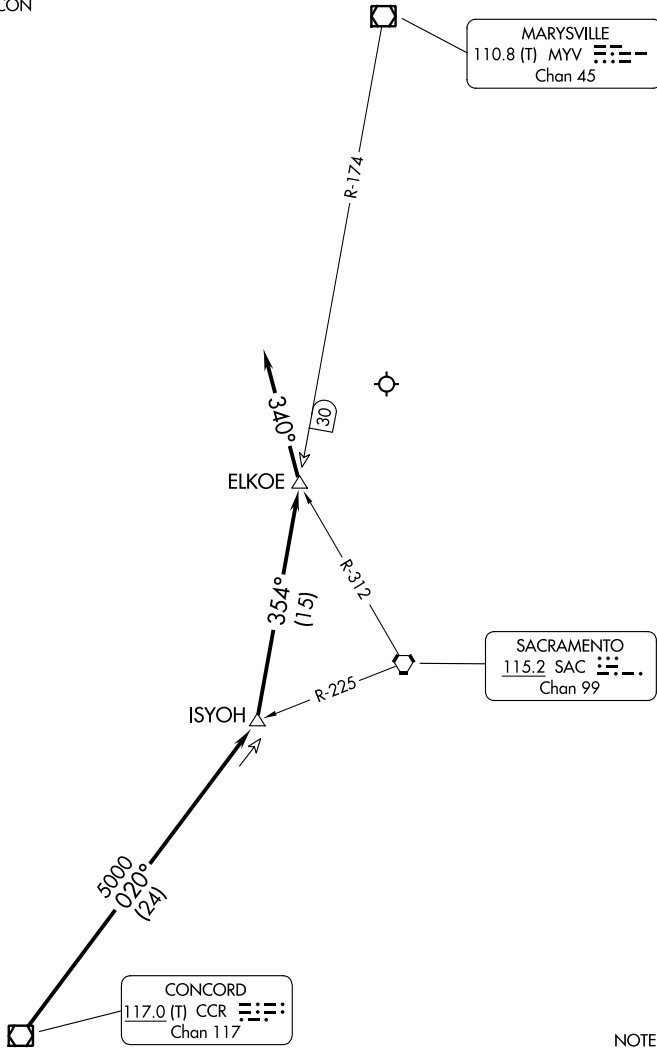
(CCR.CCR2) 24025

# CONCORD TWO ARRIVAL

AL-5490 (FAA)

SACRAMENTO INTL (SMF)  
SACRAMENTO, CALIFORNIA

NORCAL APP CON  
125.25 257.9



NOTE: Chart not to scale.

## ARRIVAL ROUTE DESCRIPTION

From over CCR VOR/DME via CCR R-020 to ISYOH INT, then via MYV R-174 to ELKOE INT, then on heading 340°. Expect RADAR vectors to final approach course.

# CONCORD TWO ARRIVAL

(CCR.CCR2) 15NOV12

SACRAMENTO, CALIFORNIA  
SACRAMENTO INTL (SMF)

SW-2, 26 DEC 2024 to 23 JAN 2025

SW-2, 26 DEC 2024 to 23 JAN 2025