

SW-2, 26 DEC 2024 to 23 JAN 2025

**TOP ALTITUDE:  
ASSIGNED BY ATC**

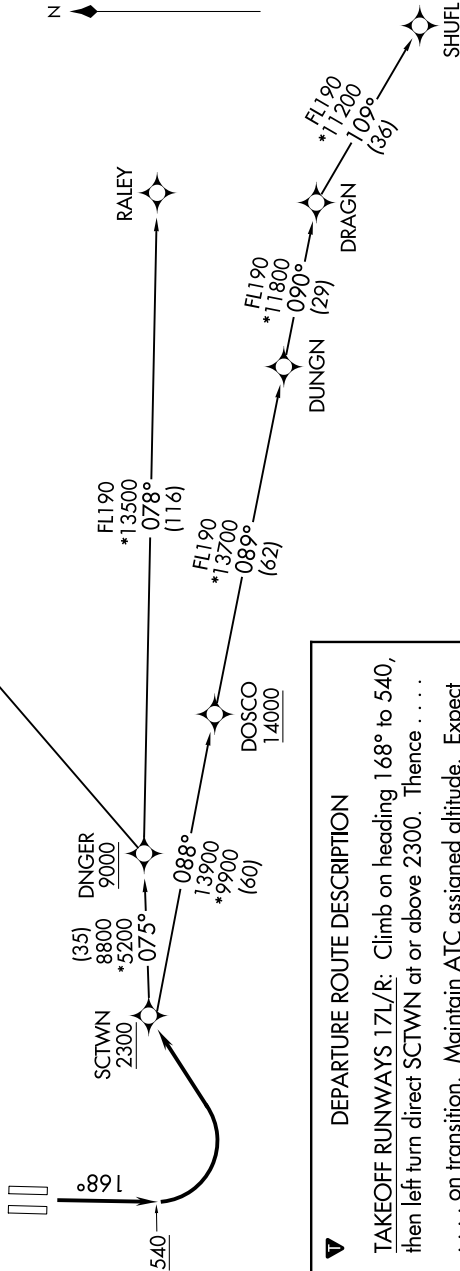
RNAV - DME/DME/IRU or GPS

RADAR required for non-GPS equipped aircraft.

NORCAL DEP CON  
127.4 317.5

**TAKEOFF MINIMUMS**

Rwys 17L/R: Standard with minimum climb of 500' per NM to 540.



**DEPARTURE ROUTE DESCRIPTION**

**TAKEOFF RUNWAYS 17L/R:** Climb on heading 168° to 540, then left turn direct SCTWN at or above 2300. Thence . . . .

. . . . on transition. Maintain ATC assigned altitude. Expect filed altitude 5 minutes after departure.

**MACUS TRANSITION (SCTWN4.MACUS)**

**RALEY TRANSITION (SCTWN4.RALEY)**

**SHUFL TRANSITION (SCTWN4.SHUFL)**

NOTE: Chart not to scale.

SW-2, 26 DEC 2024 to 23 JAN 2025