

VOR/DME MAD	APP CRS	Rwy Idg	3100
<b>110.4</b>	<b>345°</b>	TDZE	<b>99</b>
Chan 41		Apt Elev	<b>103</b>

# VOR RWY 36

## MERIDEN MARKHAM MUNI (MMK)

**▼** Rwy 36 helicopter visibility reduction below 1 SM NA. Procedure NA at night.  
**▲**

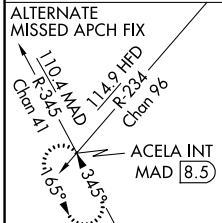
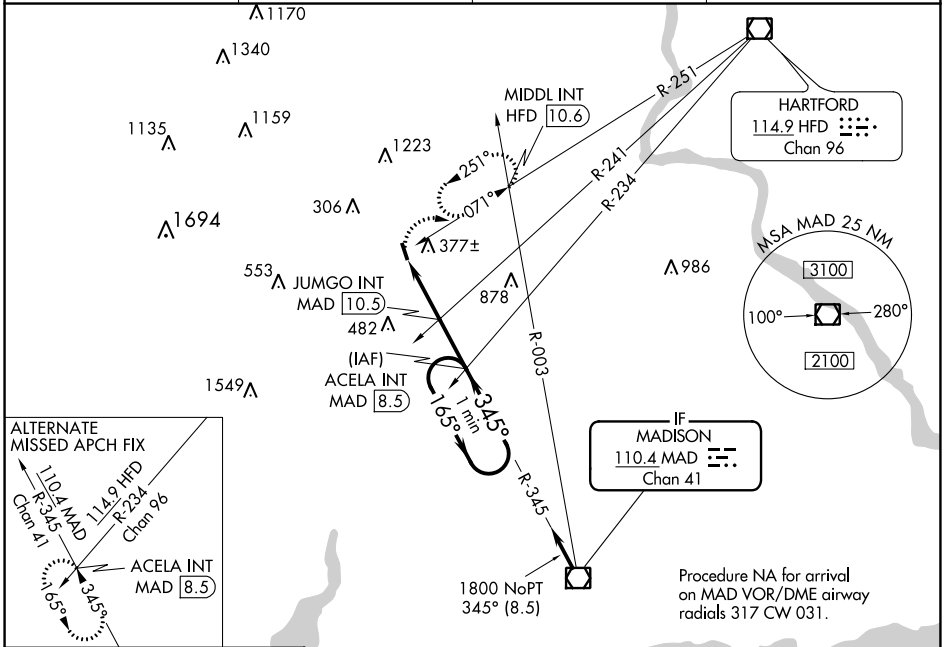
**MISSED APPROACH:** Climbing right turn to 2700 on HFD VOR/DME R-251 to MIDL INT/HFD 10.6 DME and hold, continue climb-in-hold to 2700.

ASOS  
**134.925**

BRADLEY APP CON  
**127.8 269,325**

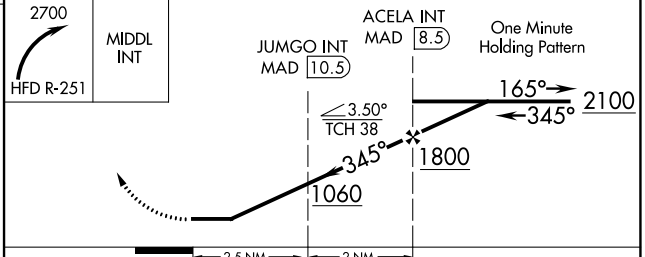
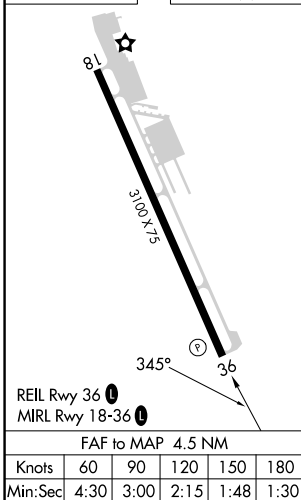
CLNC DEL  
**120.65**

UNICOM  
**123.05 (CTAF)**



Procedure NA for arrival on MAD VOR/DME airway radials 317 CW 031.

ELEV 103	TDZE 99
----------	---------



CATEGORY	A	B	C	D
S-36	1060-1¼ 961 (1000-1½)	1060-1½ 961 (1000-1½)		NA
<b>C</b> CIRCLING	1060-1¼ 957 (1000-1½)	1060-1½ 957 (1000-1½)		NA
<b>JUMGO FIX MINIMUMS (DUAL VOR RECEIVERS OR DME REQUIRED)</b>				
S-36	880-1 781 (800-1)	880-1¼ 781 (800-1½)		NA
<b>C</b> CIRCLING	880-1 777 (800-1)	920-1¼ 817 (900-1½)		NA

NE-1, 26 DEC 2024 to 23 JAN 2025

NE-1, 26 DEC 2024 to 23 JAN 2025