

FORT BELVOIR, VIRGINIA

ILS or LOC RWY 32

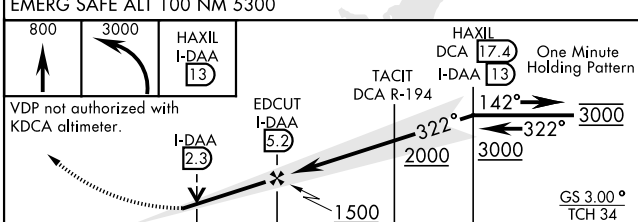
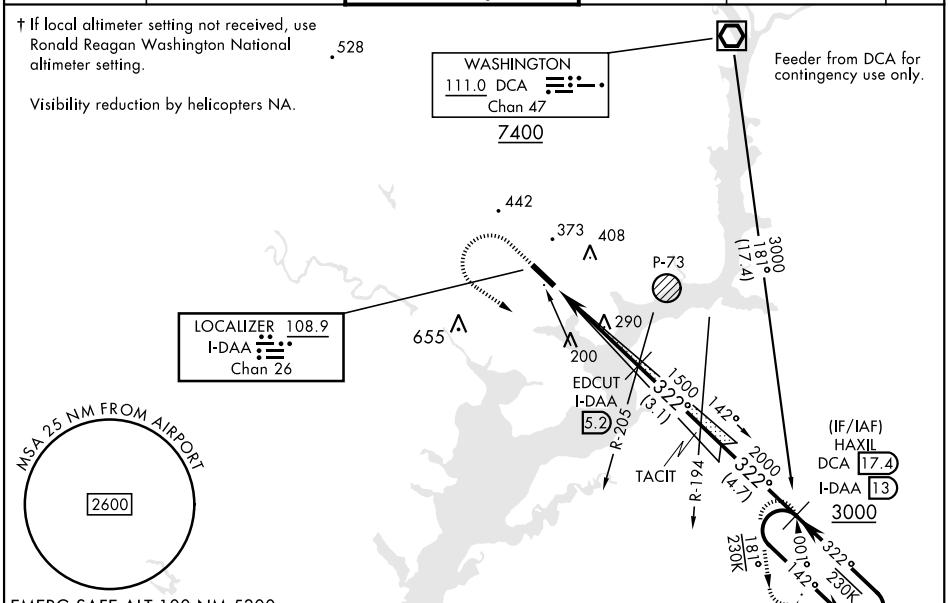
LOC/DME I-DAA 108.9 Chan 26	APCH CRS 322°	Rwy Ildg TDZE Arpt Elev 4529 68 74
---	-------------------------	--

[USA]

DAVISON AAF (KDAV)

RADAR required	MALSF A4	MISSED APPROACH: Climb to 800, then climbing left turn to 3000 direct to HAXIL (DCA R-181/ 17.4 DME) and hold. Continue climb in hold to 3000.
----------------	-------------	--

ATIS 128.175	POTOMAC APP CON 118.95 319.1	TOWER * 124.275 (CTAF) 0 229.4	GND CON 121.9 351.8	CLNC DEL 351.8	PAR
------------------------	--	---	-------------------------------	--------------------------	-----



ELEV 74	TDZE 68
Rwy 14 Ildg 4930'	
Rwy 32 Ildg 4529'	

CATEGORY	A	B	C	D
S-ILS 32*	348/40 280		(300-¾)	
S-LOC 32**	580/40	512 (600-¾)	580-1¼	512 (600-1¼)
CIRCLING	680-1	720-1	760-2	1000-3
	606 (700-1)	646 (700-1)	686 (700-2)	926 (1000-3)
† RONALD REAGAN WASHINGTON NATIONAL ALTIMETER SETTING MINIMUMS				
S-ILS 32	388/40 320		(400-¾)	
S-LOC 32***	620/40	552 (600-¾)	620-1⅝	552 (600-1⅝)
CIRCLING	720-1	760-1	800-2	1040-3
	646 (700-1)	686 (700-1)	726 (800-2)	966 (1000-3)

HIRL Rwy 14-32

FAF to MAP 4.4 NM					
Knots	60	90	120	150	180
Min:Sec	4:24	2:56	2:12	1:46	1:28

FORT BELVOIR, VIRGINIA
Orig 05SEP24

38°43'N-77°11'W

DAVISON AAF (KDAV)

ILS or LOC RWY 32

NE-3, 26 DEC 2024 to 23 JAN 2025

NE-3, 26 DEC 2024 to 23 JAN 2025