

FORT BELVOIR, VIRGINIA

RNAV (GPS) RWY 32

WAAS CH 91281 W32A	APCH CRS 323°	Rwy ldg TDZE 68	4529
		Arprt Elev	74

-(USA)

DAVISON AAF (KDAV)

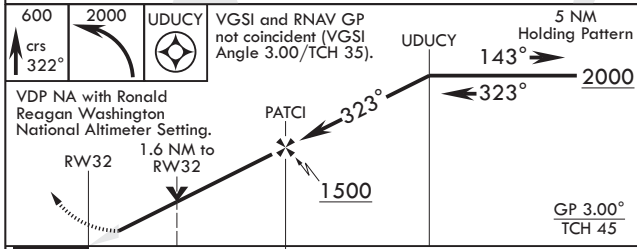
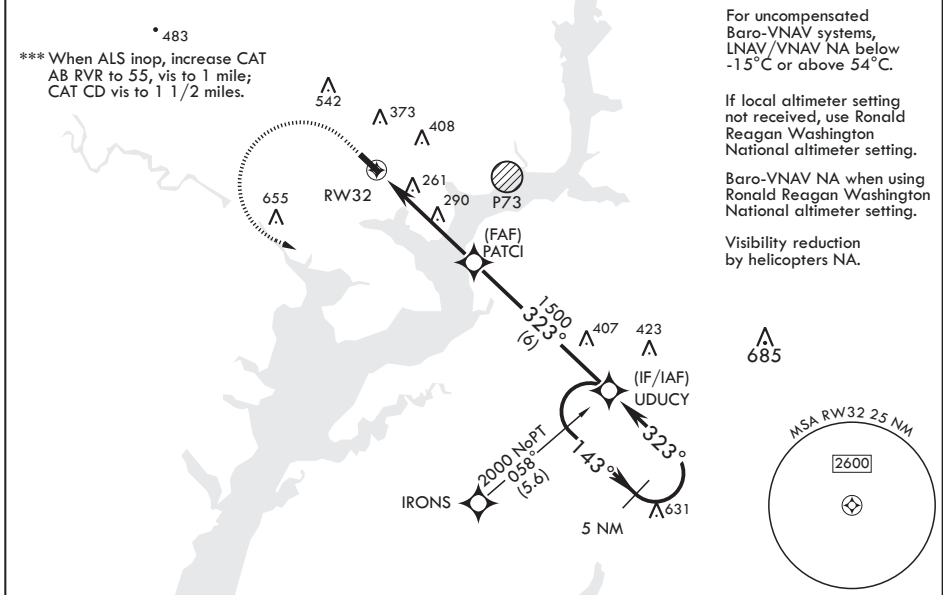
RNP APCH-GPS

▼ * When ALS inop, increase RVR to 45, vis to 7/8 mile.
** When ALS inop, increase vis to 1 3/8 miles.

MALS
(A4)

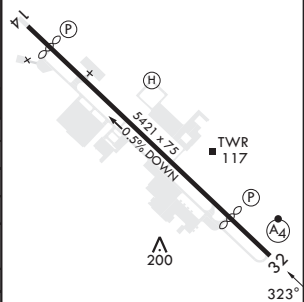
MISSED APPROACH: Climb to 600 then climbing left turn to 2000 direct UDUY and hold.

ATIS 128.175	POTOMAC APP CON 118.95 319.1	TOWER * 124.275 (CTAF) 0 229.4	GND CON 121.9 351.8	CLNC DEL 351.8	PAR
------------------------	--	---	-------------------------------	--------------------------	-----



ELEV 74	TDZE 68
Rwy 14 ldg 4930'	Rwy 32 ldg 4529'

CATEGORY	A	B	C	D
LPV DA*	351/40	283	(300-¾)	
LNAV/VNAV DA**	481/50	413	(500-1)	
LNAV MDA***	540/40 472 (500-¾)	540/60 472 (500-1½)		
CIRCLING	700-1 626 (700-1)	740-1 666 (700-1)	800-2 726 (800-2)	1000-3 926 (1000-3)
	RONALD REAGAN WASHINGTON NATIONAL ALTIMETER MINIMUMS			
LPV DA*	384/40	316	(400-¾)	
LNAV/VNAV DA	514/55	446	(500-1)	
LNAV MDA***	580/40 512 (600-¾)	580-1¼ 512 (600-1¼)		
CIRCLING	720-1 646 (700-1)	780-1 706 (800-1)	820-2¼ 746 (800-2¼)	1040-3 966 (1000-3)



FORT BELVOIR, VIRGINIA
Amdt 4 30NOV23

38°43'N - 77°11'W

DAVISON AAF (KDAV)

RNAV (GPS) RWY 32

NE-3, 26 DEC 2024 to 23 JAN 2025

NE-3, 26 DEC 2024 to 23 JAN 2025