

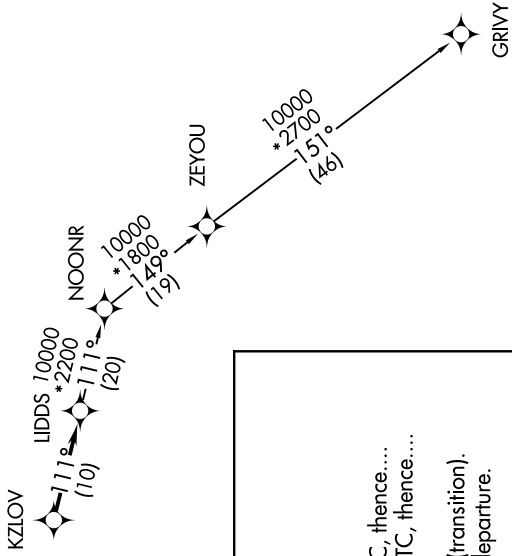
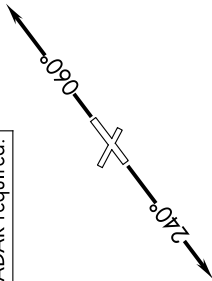
EC-1, 26 DEC 2024 to 23 JAN 2025

ATIS
134.55
CLNC DEL
121.6
GND CON
121.6
ANN ARBOR TOWER *
120.3 (CTAF)
DETROIT DEP CON
118.95 284.0

TAKEOFF MINIMUMS:
Rwys 12, 30: NA - Environmental.
Rwys 6, 24: Standard.

RNAV 1 - DME/DME/IRU or GPS.
RADAR required.

TOP ALTITUDE:
ASSIGNED BY ATC



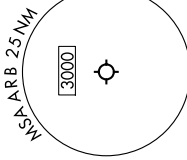
KZLOV

LIDDS 10000

NOONR

ZEYOU

GRIVY



NOTE: Turboprop departures at/above 10000,
maintain 280K until advised by ATC.

DEPARTURE ROUTE DESCRIPTION

TAKEOFF RUNWAY 6: Climb on heading 060° or as assigned by ATC, thence....
TAKEOFF RUNWAY 24: Climb on heading 240° or as assigned by ATC, thence....
....for RADAR vectors to KZLOV, then on track 111° to LIDDS, then on (transition).
Maintain ATC assigned altitude, expect filed altitude 10 minutes after departure.

GRIVY TRANSITION (LIDDS3.GRIVY):

NOTE: Chart not to scale.

EC-1, 26 DEC 2024 to 23 JAN 2025