

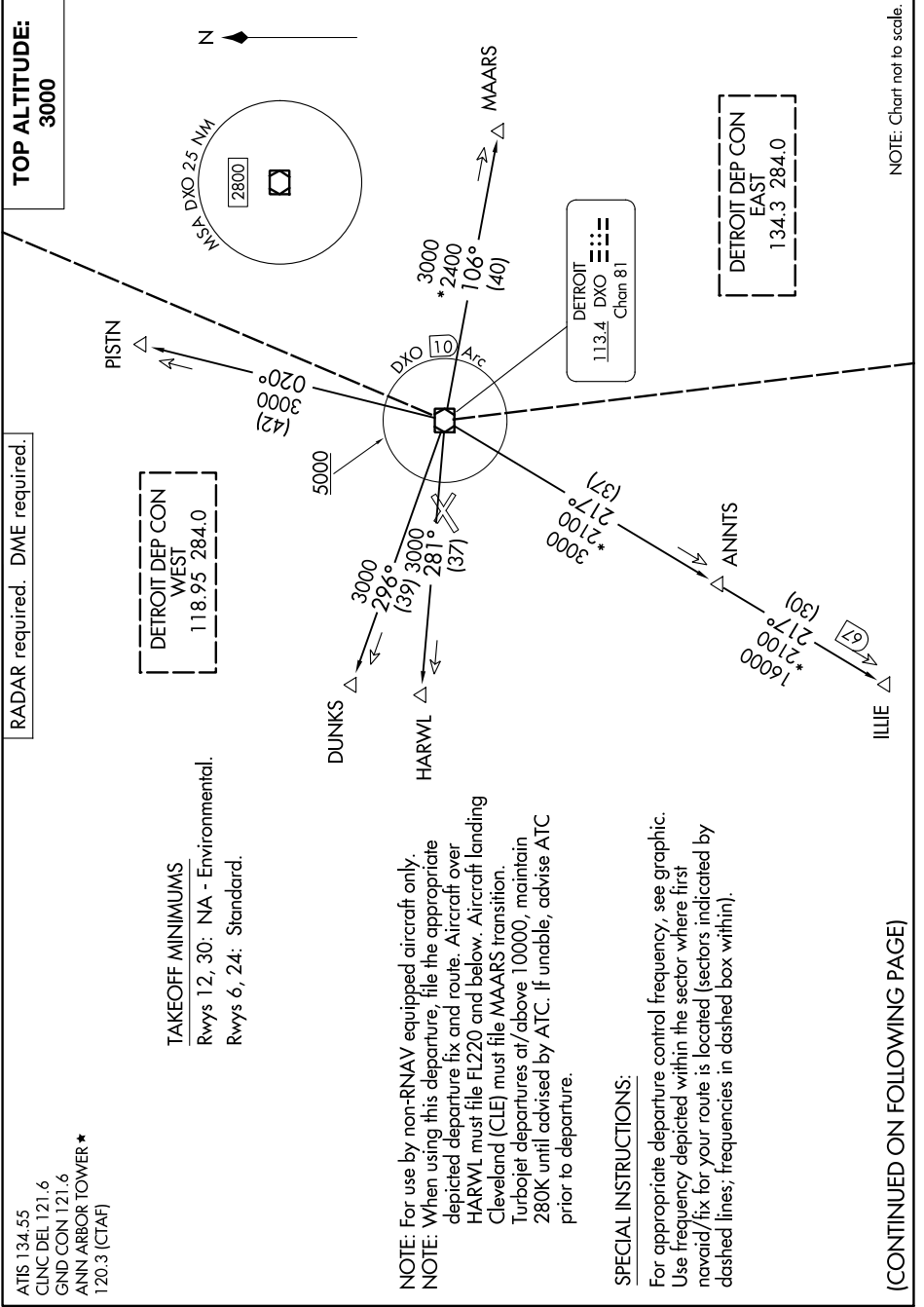
METRO FOUR DEPARTURE

AL-5506 (FAA)

ANN ARBOR MUNI (ARB)

ANN ARBOR, MICHIGAN

EC-1, 26 DEC 2024 to 23 JAN 2025



NOTE: Chart not to scale.

ATIS 134.55
 CLNC DEL 121.6
 GND CON 121.6
 ANN ARBOR TOWER ★
 120.3 (CTAF)

TAKEOFF MINIMUMS
 Rwy 12, 30: NA - Environmental.
 Rwy 6, 24: Standard.

NOTE: For use by non-RNAV equipped aircraft only.
NOTE: When using this departure, file the appropriate depicted departure fix and route. Aircraft over HARWL must file FL220 and below. Aircraft landing Cleveland (CLE) must file MAARS transition. Turbojet departures at/above 10000, maintain 280K until advised by ATC. If unable, advise ATC prior to departure.

SPECIAL INSTRUCTIONS:

For appropriate departure control frequency, see graphic. Use frequency depicted within the sector where first navaid/fix for your route is located (sectors indicated by dashed lines; frequencies in dashed box within).

(CONTINUED ON FOLLOWING PAGE)

EC-1, 26 DEC 2024 to 23 JAN 2025

METRO FOUR DEPARTURE

ANN ARBOR, MICHIGAN

ANN ARBOR MUNI (ARB)