

VORTAC SVM 114.3 Chan 90	APP CRS 035°	Rwy Idg TDZE Apt Elev	3505 831 839
--	------------------------	-----------------------------	---

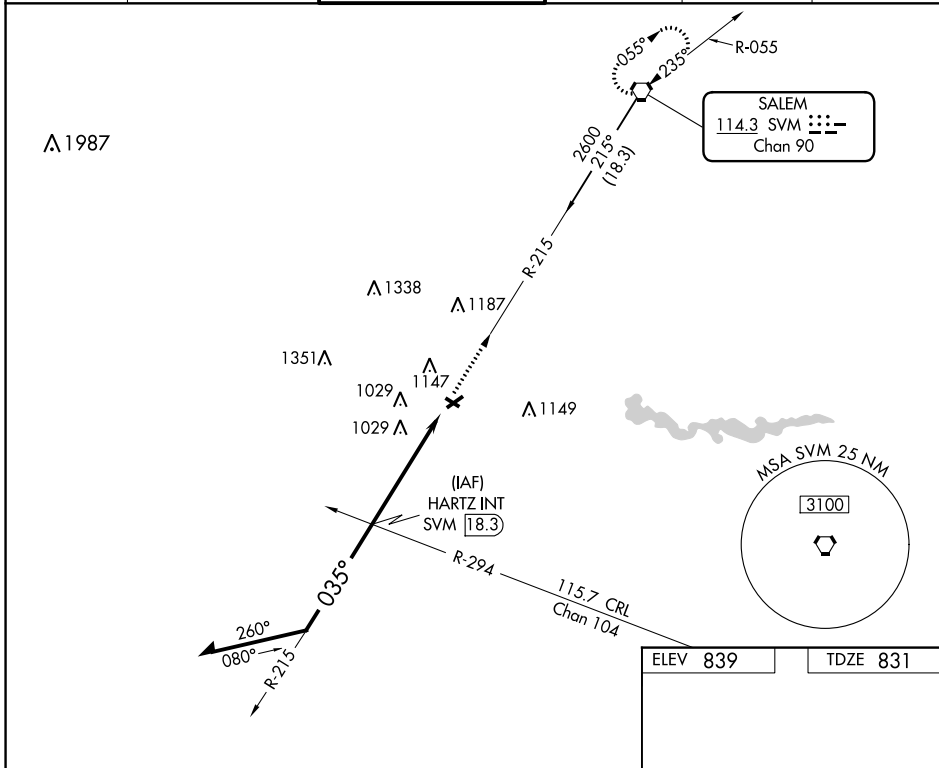
VOR RWY 6

ANN ARBOR MUNI (A.R.B.)

▼ When local altimeter setting not received, use Willow Run altimeter setting and increase all MDA 40 feet and Cat C/D visibility 1/8 mile and Circling Cat C/D visibility 1/4 mile.
 ▲ Rwy 6 helicopter visibility reduction below 3/4 SM NA. Circling NA to Rwy 12 and 30.

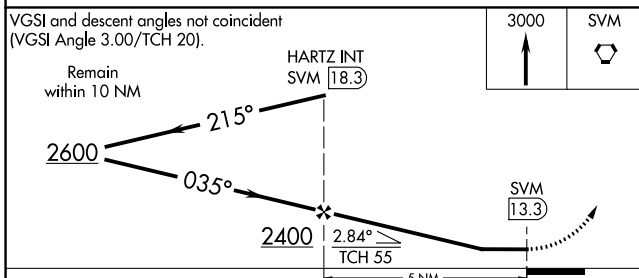
MISSED APPROACH: Climb to 3000 direct SVM VORTAC and hold.

ATIS 134.55	DETROIT APP CON 118.95 284.0	ANN ARBOR TOWER * 120.3 (CTAF) 0	GND CON 121.6	CLNC DEL 121.6	UNICOM 123.0
-----------------------	--	---	-------------------------	--------------------------	------------------------



EC-1, 26 DEC 2024 to 23 JAN 2025

EC-1, 26 DEC 2024 to 23 JAN 2025



ELEV 839	TDZE 831
----------	----------

Detailed diagram of the runway system showing RWY 6 (3505' x 75'), RWY 12 (2750' x 110'), RWY 30 (3505' x 75'), and taxiway details. A 0.6% UP 0° slope is indicated for RWY 6. The diagram also shows the tower (TWR) and the 035° approach direction.

REIL Rwy 6 **0**
MIRL Rwy 6-24 **0**

FAF to MAP 5 NM					
Knots	60	90	120	150	180
Min:Sec	5:00	3:20	2:30	2:00	1:40

CATEGORY	A	B	C	D
S-6	1360-1	529 (600-1)	1360-1½	529 (600-1½)
CIRCLING	1500-1	661 (700-1)	1500-1¾	1640-2½
			661 (700-1¾)	801 (900-2½)